

Terex Lifting Australia Pty. Ltd.

RATED CAPACITY MANUAL

MODEL MAC 25

16.6t REAR AXLE WEIGHT
BOOK PART NUMBER MXC1347B

HYDRAULIC ALL TERRAIN PICK & CARRY CRANE

"SUPERLIFT"

25 TONNE MAXIMUM RATED CAPACITY



Do not operate this crane unless you have read and understood the information in this book.

MXC1347B
RATED CAPACITY MANUAL
MAC 25 (STANDARD 1500kg COUNTERWEIGHT + EXTRA
2160kg COUNTERWEIGHT)

ALL PAGES LISTED MUST BE INCLUDED IN THIS BOOK.

| | |
|---|-----------|
| SECTION 1 - WARNINGS | 3 |
| DEFINITIONS | 4 |
| OPERATION ON SIDE SLOPES | 8 |
| SIDE SLOPE DERATION CHART | 9 |
| SECTION 2 - OPERATIONS | 11 |
| RANGE DIAGRAM | 11 |
| WORKING AREA DIAGRAM..... | 11 |
| DETACHABLE COUNTERWEIGHT | 12 |
| ATTACHMENT MASSES | 12 |
| HOOK BLOCK RATED CAPACITY..... | 12 |
| ROPE SPECIFICATIONS..... | 13 |
| TYRE SPECIFICATIONS | 13 |
| TYRE INFLATION | 13 |
| SECTION 3 – LIFTING CAPACITY | 14 |
| RANGE DIAGRAM | 14 |
| LOAD MOMENT INDICATOR DUTIES | 15 |
| 1500 kg COUNTERWEIGHT ON FRONT | 15 |
| 1500 kg COUNTERWEIGHT ON REAR | 15 |
| 1500+2160 kg COUNTERWEIGHT ON REAR | 15 |

SECTION 1 - WARNINGS



DANGER

IMPROPER CRANE USE, CARE OR OPERATION CAN CAUSE INJURY, DEATH OR PROPERTY DAMAGE.

DO NOT OPERATE THIS MACHINE UNLESS YOU HAVE READ AND UNDERSTAND THE OPERATOR'S MANUAL AND CRANE RATED CAPACITY MANUAL.

COPIES OF OPERATOR'S MANUALS AND CRANE RATED CAPACITY MANUAL MAY BE OBTAINED FROM:



TEREX[®]



CAUTION

WRITTEN AUTHORISATION IS REQUIRED FROM TEREX LIFTING AUSTRALIA PTY LTD PRIOR TO THE USE OF ANY ATTACHMENT NOT SPECIFIED IN THE MANUAL.

DEFINITIONS

Articulation – The crane pivots in the middle to allow steering and slewing of the load. Working Areas for the purpose of determining Rated Capacity are less than 10° Articulation, and greater than 10° Articulation, in either direction, from straight ahead. Up to 40° Articulation is possible in either direction. See Working Area diagram

Deration – A decrease in the Rated Capacity due to external influences, expressed as a percentage.

Freely Suspended Load – Load hanging free with no direct external force applied except by the winch rope.

Load Radius – Horizontal distance from the centre of the front wheels forwards to the centre of the winch rope or tackle with load applied. "Radius" on Rated Capacity charts refers to the Load Radius in metres.

Loaded Boom Angle – This is given to assist in setting up the crane only. It gives only an approximation of the Load Radius for a specified boom length. No allowance is made for boom or tyre deflection. "Boom Angle" on Rated Capacity charts refers to the Loaded Boom Angle in degrees.

Load Moment Indicator (LMI) - A system which indicates, visually and audibly, to the operator when the Rated Capacity is approached and reached.

Rated Capacity (RC) – The total Freely Suspended Load, including the mass of material and load handling equipment, that the machine can safely lift under ideal conditions at a given boom length and Load Radius.

Side Load – Any external force applied either to the boom or load in a horizontal direction.

Work Areas – Area measured in an arc about the centre pivot as shown on the Working Area diagram. The "Articulation (green/amber)" icon on the LMI indicates which zone the crane is in. Green indicates less than 10° Articulation. Amber indicates greater than 10° Articulation.



DANGER

4. Rated Capacities above the red line are based on the machine's hydraulic or structural competence and not on machine stability. Rated Capacities below the red line are based on machine stability.
5. Rated Capacities include the mass of hooks, blocks, slings and auxiliary lifting devices. Their mass must be subtracted, from the listed Rated Capacity, to determine the equivalent net load.
6. Loaded Boom Angles at specified boom lengths give only an approximation of the Load Radius. The Boom Angle before loading should be greater to account for boom deflection increasing the Load Radius as the load is lifted.

OPERATION

1. Read and understand all warnings and instructional notes.
2. Do not tip the machine to determine allowable lifting capacities.
3. Loads may be lifted from the main boom head on the winch, the rhino hook, the fixed lug, or either of the two sliding lugs on the boom. A flyjib is also available to extend the maximum boom length and a manbasket can be pinned to the head of the boom. Always use the correct Rated Capacity chart for the lifting point in use and ensure the LMI is set to the correct duty. Written authorisation from Terex Lifting Australia Pty Ltd is required prior to the use of any attachment not specified in the manual.
4. Lifting from more than one lifting point simultaneously is neither intended nor approved.
5. Handling of personnel from the boom is neither intended nor approved, except in a Terex Lifting Australia supplied manbasket, correctly installed on the head of the boom, or other approved arrangement.
6. When either the boom length or Load Radius or both are between values listed, the smallest load shown at either the next larger Load Radius or boom length shall be used, or the interpolated value shown on the LMI may be used.
7. Side Loading of the machine and load swing out may cause structural failure or machine tip-over. Side Loads may be generated by: lifting when not level; sudden acceleration or deceleration in Articulating with a load; dragging a load; pushing a load; wind forces on load and boom structure and unstable ground.
8. It is safe to attempt to telescope any load within the limits of the Rated Capacity Manual. The maximum load that may be telescoped is limited by hydraulic pressure, Loaded Boom Angle and powered boom sections lubrication.



DANGER

SPECIAL PRECAUTIONS FOR ARTICULATED CRANES

THERE IS A POTENTIAL FOR CRUSHING BETWEEN FRONT AND REAR CHASSIS WHEN THE MACHINE ARTICULATES. NEVER STAND IN THE PIVOT AREA WHEN THE ENGINE IS RUNNING OR EMERGENCY STEERING PUMP IS OPERATING. ALWAYS REMOVE THE KEY FROM THE IGNITION BEFORE WORKING IN THE PIVOT AREA.

DO NOT LEAVE IGNITION KEY SWITCHED ON WITH ENGINE STOPPED AND PARK BRAKE OFF, AS EMERGENCY HYDRAULIC STEERING PUMP WILL ACTIVATE.

GENERAL

1. This machine has been designed to meet the requirements of AS1418.1 & 1418.5 and has been tested in accordance with these standards for pick and carry operation on tyres.
2. Rated Capacities shown are for this machine as originally manufactured by Terex Lifting Australia Pty Ltd. The Rated Capacities only apply when all the instructions in this book are rigidly followed. Modifications to this machine or use of equipment other than that specified can result in a reduction in Rated Capacity.
3. If improperly operated or maintained, this machine can be hazardous. Operation and maintenance of this machine must be in compliance with the information documented in the operators, service and parts manuals furnished. If these manuals are missing, obtain replacements through Terex Lifting Australia Pty Ltd or their agents.
4. This machine is classified C3.

SET-UP

1. Reduced crane Rated Capacities for the particular job shall be established, by the operator, with due allowance for adverse operating conditions. These conditions include the supporting surface, pendulum action of the load, jerking or sudden stops of the load and other factors affecting stability, two machine lifts, electrical wires, adverse weather, wind, hazardous surroundings, experience of personnel, etc.
2. Rated Capacity is based on Freely Suspended Loads with the machine on a firm, level (max. 1% slope / 0.6°) and uniform surface. Lifting, or travelling with a load, on soft or uneven ground can be hazardous and will reduce the Rated Capacity of the crane. Refer to the "OPERATION ON SIDE SLOPES" in this manual. No attempt shall be made to drag the load along the ground in any direction.
3. Wind forces on the boom, resulting from winds up to 10 m/s (36 km/h), are incorporated in the Rated Capacity. Any additional Side Loading due to wind forces on the load will reduce the Rated Capacity, and must be considered.



CAUTION

9. The winch rope is fully compensated for boom extension. The only exception is when the third extension is being used. Refer to the operator's manual for information on the use of the third extension.
10. Do not allow the winch rope to unwind fully. Always ensure a minimum of 2 wraps of rope remain on the winch drum. Note the areas on the range diagram where the fall block cannot reach the ground on 6 parts of rope.
11. Rated Capacity depends on tyre rating, tyre condition and tyre inflation pressure. All tyres must be in good condition and must be inflated to the recommended pressure before attempting a lift.
12. Pick & carry operation is permitted through the full Articulation range, however, Rated Capacity is reduced above 10° Articulation. Use the reduced capacities in the rated capacity chart if entering this Articulation zone during the operation.
13. The maximum speed for pick & carry operation is 0.4m/s (1.44km/h). The transfer case shall be set to low range.
14. Operation of this crane in excess of the Rated Capacity and disregard of the instructions is hazardous.

OPERATION ON SIDE SLOPES

Mobile Cranes are primarily designed to be used on firm, flat, level ground (to within 1% gradient), according to AS 1418.5, any deviation from this requires that the Rated Capacity shall be reduced accordingly. As per AS 2550.5 – negotiation of slopes by mobile cranes travelling with Freely Suspended Loads should be avoided. The following precautions should be taken when operating on side slopes of up to 5° (8.75% gradient) – **REMEMBER** surface depressions and potholes will create the same effect as a side slope.

Ensure the tyres are correctly **INFLATED** as per the rated capacity manual.

Ensure the ground condition is **FIRM** enough to support the axle loads.

REDUCE the Rated Capacity of the crane by the percentage value for the crane as shown in figure 1 for operating on side slopes up to 5° (8.75% gradient) - **REMEMBER** the crane's load moment indicator will **NOT** automatically derate the Rated Capacity.

Use the crane's side slope inclinometer as a guide only, it is most accurate when the crane's Articulation is straight ahead without suspending a load. All Articulated chassis cranes will show some degree of side tilt, when Articulated with a load – this should not be confused with the ground's side slope.

Use the **MINIMUM** boom length and Loaded Boom Angle practical to keep the boom tip as close to the ground as possible.

Keep the load as **CLOSE** to the ground as possible.

Use the **MINIMUM** Articulation angle practical - **REMEMBER** the crane will side tilt and hence the hook will move towards the direction of Articulation whilst steering.

Keep the load on the **UPHILL** side of the crane where possible, especially when Articulated – **REMEMBER** the working Load Radius will increase if the load is suspended in the downhill position.

Load swing greatly reduces stability – **REMEMBER** to tagline loads to prevent pendulum motion of the load. Travel and crane motions should be applied gently to minimise this effect.

Sudden acceleration or deceleration of suspended load can also reduce stability – **REMEMBER** to travel gently to reduce load swing.

SIDE SLOPE DERATION CHART

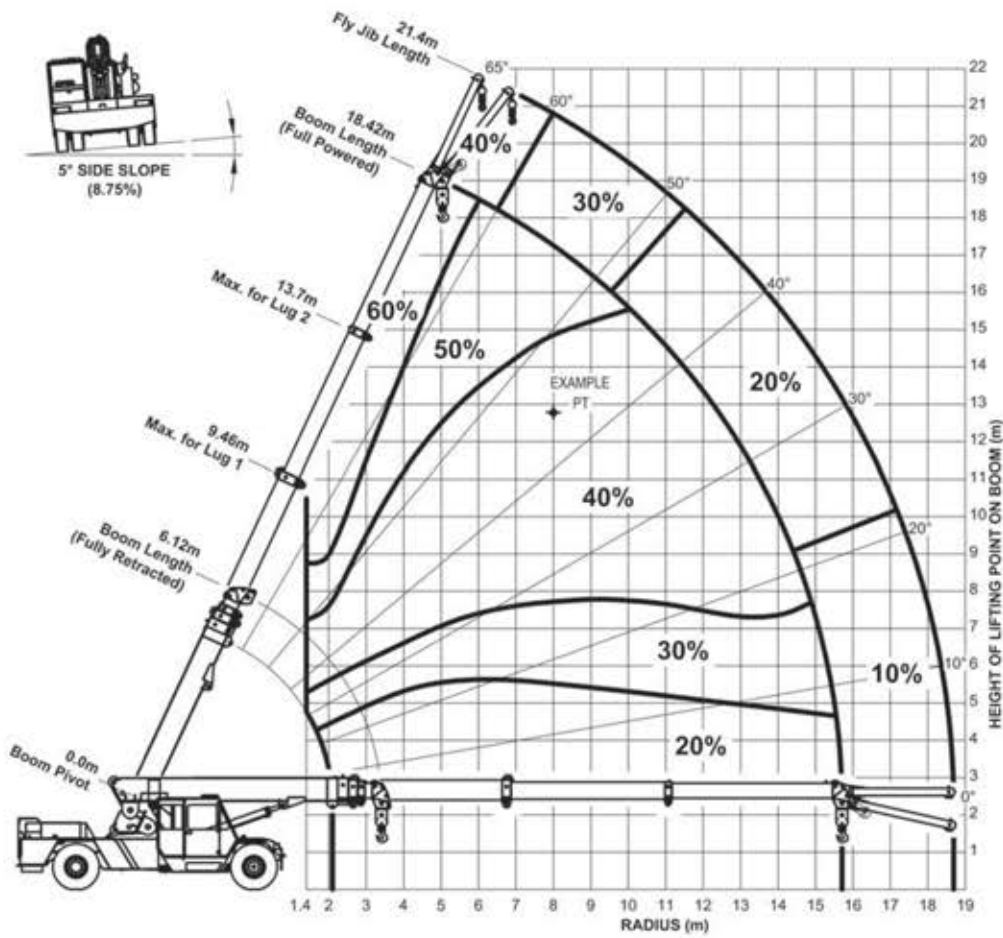


Figure 1: Percentage Deration Chart for MAC 25 at 5° Side Slope

NOTE

1. Percentage deration chart is based on 66.6% stability as per AS 1418.5 with the crane on a firm side slope of 5° (8.75% Gradient).
2. The percentage deration is dependent upon the location of the lifting point on the boom.
3. The percentage deration should be applied to the Rated Capacity as read off the Rated Capacity chart for the applicable boom length, Loaded Boom Angle, Load Radius, Articulation Angle and Counterweight Position. See over page for an example.

Example (For MAC 25 Crane, Rated Capacity manual MXC1347B): See Percentage Deration Chart for

Lifting condition:-

Boom Length: 15.0 m

Loaded Boom Angle: 45°

Load Radius: 8.0 m

Articulation Angle: Greater than 10°

Counterweight: Fitted on rear of crane

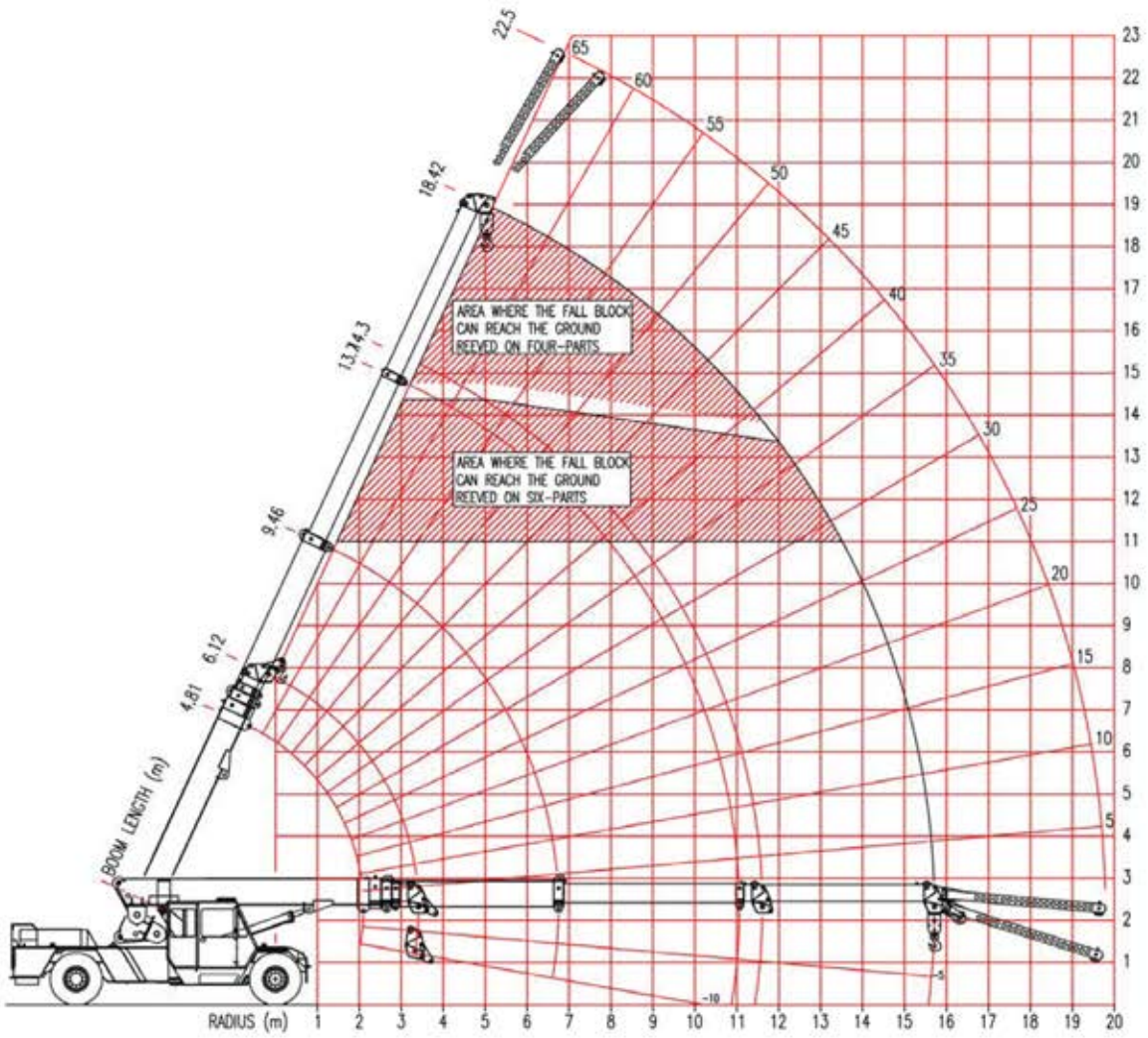
RC (Level ground): 3700 kg (From Load Chart MXC1268A, for above lifting conditions)

Percentage Deration: 40 % (From Figure 1: Percentage Deration Chart)

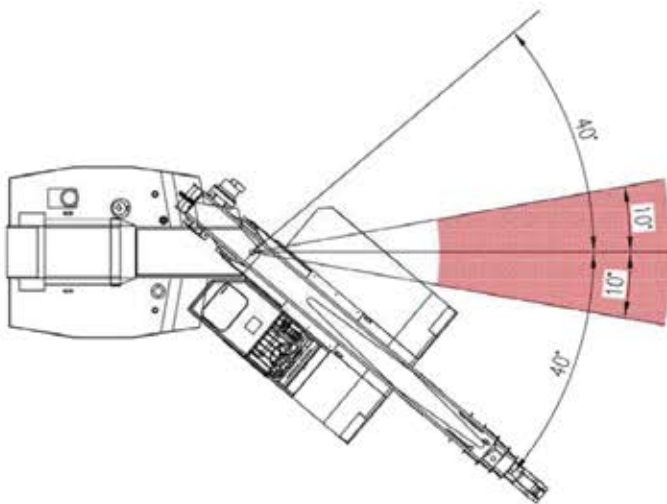
$$\begin{aligned} \text{RC (5° Slide Slope)} &= \text{RC (as per Rated Capacity chart)} - \text{Percentage Deration} \\ &\quad \times \text{RC (as per Rated Capacity chart)} / 100 \% \\ &= 3700 \text{ kg} - 40\% \times 3700 \text{ kg} / 100\% \\ &= 2220 \text{ kg} \end{aligned}$$

SECTION 2 - OPERATIONS

RANGE DIAGRAM



WORKING AREA DIAGRAM



DETACHABLE COUNTERWEIGHT

WEIGHT: 1500kg

TO BE FRONT MOUNTED FOR ROAD TRAVEL

PART NO: PLMXF2034

EXTRA COUNTERWEIGHT: 2160kg

NOT TO BE FITTED FOR ROAD TRAVEL

PART NO: PLMXF2019

ATTACHMENT MASSES

| | | |
|------------------------------|-----------|--------|
| FOUR/SIX PART FALL BLOCK | PLMXA3018 | 180 kg |
| FOUR/SIX PART FALL BLOCK | PLMXA3033 | 230 kg |
| 25 T HOOK | PP2087500 | 20 kg |
| 9 T HOOK | PP2190200 | 10 kg |
| SINGLE PART HOOK BLOCK | PL16M2090 | 30 kg |
| RHINO HOOK | PLMXF3015 | 25 kg |
| 12 METRIC TONNE SPREADER BAR | PL16A3035 | 94 kg |
| 15 METRIC TONNE SPREADER BAR | PL15A8023 | 107 kg |

NOTE: THESE MASSES APPLY ONLY TO TEREX LIFTING AUSTRALIA PTY LTD SUPPLIED EQUIPMENT.

HOOK BLOCK RATED CAPACITY

| Number of Parts of Rope | Permissible HOOK BLOCK RC (kg) |
|-------------------------|--------------------------------|
| 1 | 4 200 |
| 2 | 8 400 |
| 4 | 16 800 |
| 6 | 25 000 |

ROPE SPECIFICATIONS

WIRE ROPE:

Ø14mm

35W x 7 NR 2070 MPa

MINIMUM BREAKING FORCE 165 kN

MACHINE SPLICE & THIMBLE EYE ONE END ONLY

LENGTH - 110m

RETRACT ROPE:

Ø11mm

6 x 25 WRC G2070

MINIMUM BREAKING FORCE 82.4kN

EXTENSION CHAIN:

BL1066 LEAF CHAIN

MINIMUM BREAKING FORCE 40 000 KGF

TYRE SPECIFICATIONS

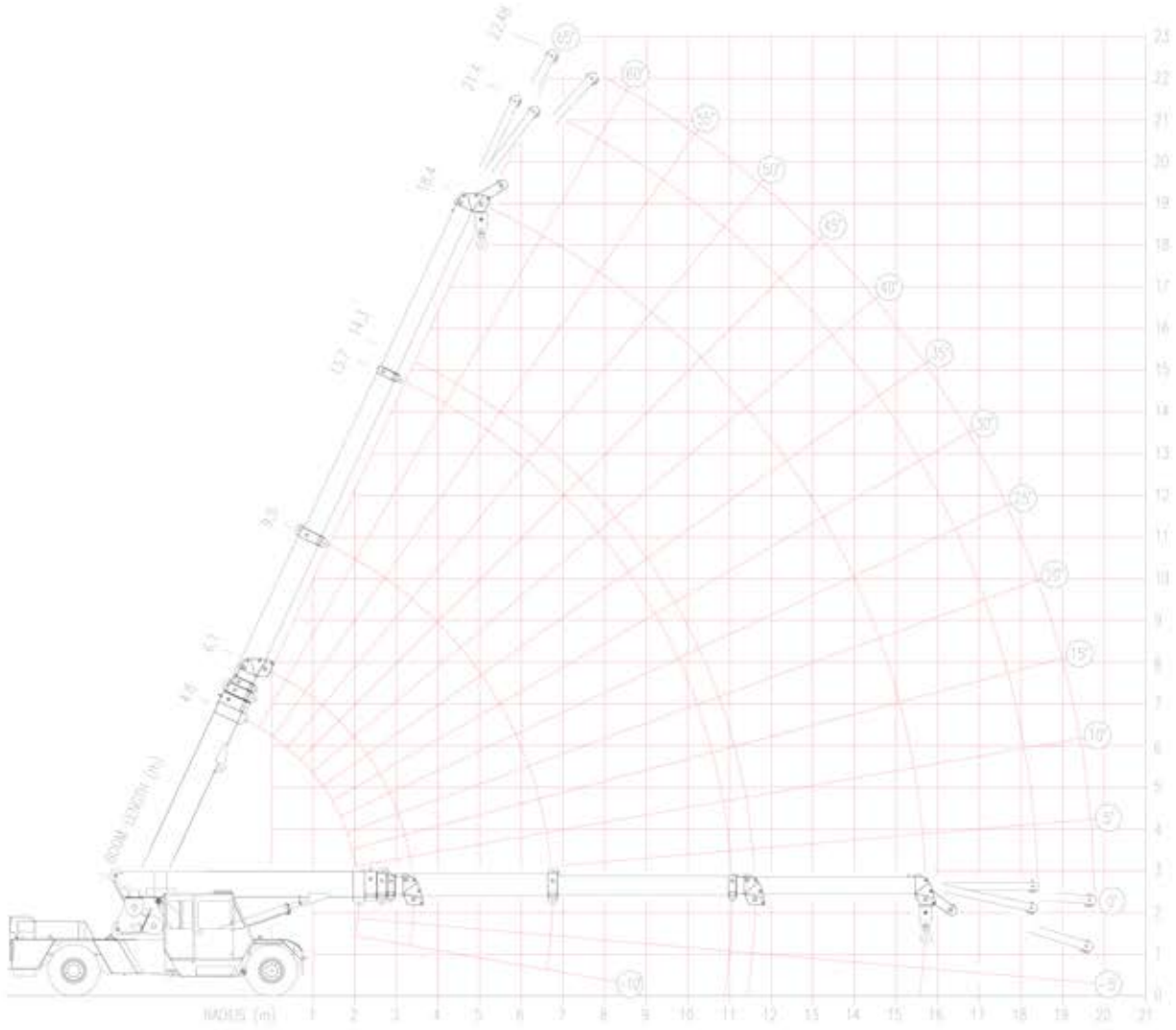
| Type | Condition | Speed | Load Rating |
|--------------------------|--------------|------------|---|
| 14.00 x 20 Dual Tyres | Pick & Carry | <1.44 km/h | 10500 kg per tyre at 830 kPa (120 psi) (dual fitment) |
| | Highway | 80 km/h | 3050 kg per tyre at 620 kPa (90 psi) (dual fitment) |

TYRE INFLATION

| Type | Position | Inflation Pressure | |
|--------------------------|----------|--|-------------------|
| | | Pick & Carry | Highway Travel |
| 14.00 x 20 Dual Tyres | Front | 830 kPa (120 psi) (Max RC 25 tonne) | 830 kPa (120 psi) |
| | Rear | 620 kPa (90 psi) | 620 kPa (90 psi) |

SECTION 3 – LIFTING CAPACITY

RANGE DIAGRAM



CONDITIONS:

FRONT SPRING LOCKOUTS TO BE ENGAGED FOR ALL LIFTING AND PICK AND CARRY OPERATIONS.

LOAD MOMENT INDICATOR DUTIES

1500 kg COUNTERWEIGHT ON FRONT

| DUTY | DESCRIPTION |
|------|--|
| 101 | FALL BLOCK |
| 102 | RHINO HOOK |
| 103 | OFFSET HEAD – BOTTOM POSITION |
| 104 | OFFSET HEAD – TOP POSITION |
| 105 | 3M FLYJIB –TOP POSITION - 0° OFFSET |
| 106 | 3M FLYJIB –TOP POSITION – 12.5° OFFSET |
| 107 | 4M FLYJIB – TOP POSITION - 5° OFFSET |
| 108 | 4M FLYJIB – BOTTOM POSITION – 17.5° OFFSET |
| 109 | MAN BASKET |
| 110 | BUTT LUG |
| 111 | LUG 1 – BOOM 1 |
| 112 | LUG 2 – BOOM 2 |

1500 kg COUNTERWEIGHT ON REAR

| DUTY | DESCRIPTION |
|------|--|
| 201 | FALL BLOCK |
| 202 | RHINO HOOK |
| 203 | OFFSET HEAD – BOTTOM POSITION |
| 204 | OFFSET HEAD – TOP POSITION |
| 205 | 3M FLYJIB –TOP POSITION - 0° OFFSET |
| 206 | 3M FLYJIB –TOP POSITION – 12.5° OFFSET |
| 207 | 4M FLYJIB – TOP POSITION - 5° OFFSET |
| 208 | 4M FLYJIB – BOTTOM POSITION – 17.5° OFFSET |
| 209 | MAN BASKET |
| 210 | BUTT LUG |
| 211 | LUG 1 – BOOM 1 |
| 212 | LUG 2 – BOOM 2 |

1500+2160 kg COUNTERWEIGHT ON REAR

| DUTY | DESCRIPTION |
|------|--|
| 301 | FALL BLOCK |
| 302 | RHINO HOOK |
| 303 | OFFSET HEAD – BOTTOM POSITION |
| 304 | OFFSET HEAD – TOP POSITION |
| 305 | 3M FLYJIB –TOP POSITION - 0° OFFSET |
| 306 | 3M FLYJIB –TOP POSITION – 12.5° OFFSET |
| 307 | 4M FLYJIB – TOP POSITION - 5° OFFSET |
| 308 | 4M FLYJIB – BOTTOM POSITION – 17.5° OFFSET |
| 309 | MAN BASKET |
| 310 | BUTT LUG |
| 311 | LUG 1 – BOOM 1 |
| 312 | LUG 2 – BOOM 2 |

MAC-25 FALL BLOCK LOAD CHART - 10 DEG. ART.

LMI DUTY

301

STANDARD 1500 KG COUNTERWEIGHT (PLMXF2009) + EXTRA 2160 KG COUNTERWEIGHT (PLMXF2019-) ON REAR OF CRANE - SPRING LOCKOUTS ENGAGED

RC IN KILOGRAMS FOR SLEW ANGLES OF 10 DEGREES OR LESS EITHER SIDE OF STRAIGHT AHEAD (INDICATED BY GREEN LED ON DASH).
BOOM ANGLE - UNDEFLECTED (REF.)

RC ABOVE BOLD RED LINE ARE STRUCTURAL
 RC ARE BASED ON FIRM LEVEL GROUND (1% SLOPE (0.6 DEG) AS PER AS1418.5) WITH TYRES INFLATED AS PER NOTES

NOTE: VALUES IN BRACKETS () ARE ACTUAL RADIUS AT ZERO DEG. BOOM ANGLE.
 RC ARE BASED ON 66.6% STABILITY & STRENGTH

LIFT & CARRY - THE RC SHALL BE CARRIED WITH THE MINIMUM BOOM LENGTH & AS CLOSE TO THE GROUND AS POSSIBLE AT SPEEDS NOT IN EXCESS OF 0.4 m/s (1.44 km/h)

| Radius in Metres | BOOM PIVOT TO HEAD SHEAVES - THIRD BOOM RETRACTED (metres) | | | | | | | | | | | | | | | | | THIRD BOOM EXTENDING (metres) | | | | | | | | | |
|------------------|--|-------|-------|-------|-------|-------|-------|-------|-------|-------|-------|-------|-------|-------|-------|-------|-------|-------------------------------|-------|-------|-------|-------|-------|-------|-------|-------|--|
| | 6.12 | 6.50 | 7.00 | 7.50 | 8.00 | 8.50 | 9.00 | 9.50 | 10.00 | 10.50 | 11.00 | 11.50 | 12.00 | 12.50 | 13.00 | 13.50 | 14.32 | 14.50 | 15.00 | 15.50 | 16.00 | 16.50 | 17.00 | 17.50 | 18.00 | 18.42 | |
| 1.4 | 25000 | 25000 | 25000 | 25000 | 25000 | 25000 | 25000 | 25000 | | | | | | | | | | | | | | | | | | | |
| 2.0 | 23400 | 23400 | 23250 | 23350 | 23350 | 23300 | 23300 | 23300 | 23250 | 22150 | 19300 | | | | | | | | | | | | | | | | |
| 2.5 | 21450 | 21400 | 21350 | 21350 | 21300 | 21250 | 21250 | 21200 | 21200 | 20450 | 17750 | 15550 | 14600 | | | | | | | | | | | | | | |
| 3.0 | 17600 | 17600 | 17600 | 17550 | 17500 | 17500 | 17450 | 17450 | 17400 | 17400 | 16500 | 14350 | 13500 | 13000 | 12600 | 12250 | | | | | | | | | | | |
| 3.5 | 15250 | 14850 | 14850 | 14850 | 14800 | 14800 | 14750 | 14750 | 14750 | 14700 | 14700 | 13350 | 12600 | 12150 | 11750 | 11400 | 10850 | 10750 | | | | | | | | | |
| 4.0 | | 13600 | 12800 | 12800 | 12800 | 12750 | 12750 | 12750 | 12700 | 12700 | 12700 | 12550 | 11750 | 11350 | 10950 | 10600 | 10100 | 10050 | 9850 | 9650 | | | | | | | |
| 5.0 | | | 11800 | 10400 | 9900 | 9900 | 9900 | 9900 | 9900 | 9850 | 9850 | 9850 | 9800 | 9650 | 9350 | 8900 | 8800 | 8650 | 8500 | 8400 | 8250 | 8150 | 8000 | 7900 | | | |
| 6.0 | | | | | 9250 | 8300 | 8000 | 8000 | 8000 | 8000 | 7950 | 7950 | 7950 | 7950 | 7950 | 7900 | 7900 | 7900 | 7750 | 7600 | 7450 | 7350 | 7200 | 7100 | 7000 | 6950 | |
| 7.0 | | | | | | | 7500 | 6850 | 6600 | 6600 | 6600 | 6600 | 6600 | 6600 | 6600 | 6550 | 6600 | 6600 | 6650 | 6700 | 6600 | 6500 | 6400 | 6300 | 6250 | | |
| 8.0 | | | | | | | | | | | | | | | | | | | | | | | | | | | |
| 9.0 | | | | | | | | | | | | | | | | | | | | | | | | | | | |
| 10 | | | | | | | | | | | | | | | | | | | | | | | | | | | |
| 11 | | | | | | | | | | | | | | | | | | | | | | | | | | | |
| 12 | | | | | | | | | | | | | | | | | | | | | | | | | | | |
| 13 | | | | | | | | | | | | | | | | | | | | | | | | | | | |
| 14 | | | | | | | | | | | | | | | | | | | | | | | | | | | |
| 15 | | | | | | | | | | | | | | | | | | | | | | | | | | | |
| 15.71 | | | | | | | | | | | | | | | | | | | | | | | | | | | |

MAC-25 FALL BLOCK LOAD CHART - 40 DEG. ART.**STANDARD 1500 KG COUNTERWEIGHT (PLMXF2009) + EXTRA 2160 KG COUNTERWEIGHT (PLMXF2019) ON REAR OF CRANE - SPRING LOCKOUTS ENGAGED****LMI DUTY****301**

RC IN KILOGRAMS FOR SLEW ANGLES OF GREATER THAN 10 DEGREES UP TO 40 DEGREES EITHER SIDE OF STRAIGHT AHEAD (INDICATED BY RED LED ON DASH).

BOOM ANGLE - UNDEFLECTED (REF.)

NOTE : VALUES IN BRACKETS () ARE ACTUAL RADIUS AT ZERO DEG. BOOM ANGLE.

RC ARE BASED ON 66.6% STABILITY & STRENGTH

RC ABOVE BOLD RED LINE ARE STRUCTURAL

RC ARE BASED ON FIRM LEVEL GROUND (1% SLOPE (0.6 DEG) AS PER AS1418.5)

WITH TYRES INFLATED AS PER NOTES

LIFT & CARRY - THE RC SHALL BE CARRIED WITH THE MINIMUM BOOM LENGTH & AS

CLOSE TO THE GROUND AS POSSIBLE AT SPEEDS NOT IN EXCESS OF 0.4 m/s (1.44 km/h)

| Radius in Metres | BOOM PIVOT TO HEAD SHEAVES - THIRD BOOM RETRACTED (metres) | | | | | | | | | | | | | | THIRD BOOM EXTENDING (metres) | | | | | | | | | | | | | | | |
|------------------|--|--------------|--------------|--------------|--------------|--------------|--------------|--------------|--------------|--------------|--------------|-------------|-------------|-------------|-------------------------------|-------------|-------------|-------------|-------------|-------------|-------------|-------------|-------------|-------------|-------------|-------------|-------------|--|--|--|
| | 6.12 | 6.50 | 7.00 | 7.50 | 8.00 | 8.50 | 9.00 | 9.50 | 10.00 | 10.50 | 11.00 | 11.50 | 12.00 | 12.50 | 13.00 | 13.50 | 14.32 | 14.50 | 15.00 | 15.50 | 16.00 | 16.50 | 17.00 | 17.50 | 18.00 | 18.42 | | | | |
| 1.4 | 21000 | 19600 | 18100 | 16900 | 15900 | 15000 | 14250 | 13600 | | | | | | | | | | | | | | | | | | | | | | |
| | 48 | 51 | 54 | 57 | 59 | 61 | 63 | 65 | | | | | | | | | | | | | | | | | | | | | | |
| 2.0 | 20650 | 18850 | 17150 | 15850 | 14800 | 13900 | 13200 | 12550 | 11950 | 11450 | 11000 | | | | | | | | | | | | | | | | | | | |
| | 40 | 44 | 48 | 51 | 54 | 57 | 59 | 61 | 62 | 64 | 65 | | | | | | | | | | | | | | | | | | | |
| 2.5 | 18900 | 17700 | 16450 | 15050 | 13950 | 13100 | 12350 | 11700 | 11150 | 10700 | 10250 | 9850 | 9500 | | | | | | | | | | | | | | | | | |
| | 32 | 37 | 42 | 46 | 50 | 52 | 55 | 57 | 59 | 61 | 62 | 63 | 65 | | | | | | | | | | | | | | | | | |
| 3.0 | 15700 | 15700 | 15000 | 14000 | 13200 | 12300 | 11600 | 11000 | 10450 | 10000 | 9550 | 9200 | 8850 | 8550 | 8250 | 8000 | | | | | | | | | | | | | | |
| | 21 | 29 | 35 | 41 | 45 | 48 | 51 | 53 | 55 | 57 | 59 | 61 | 62 | 63 | 64 | 65 | | | | | | | | | | | | | | |
| 3.5 | 13600 | 13250 | 13200 | 12850 | 12100 | 11500 | 10900 | 10300 | 9800 | 9350 | 8950 | 8600 | 8300 | 8000 | 7700 | 7500 | 7100 | 7050 | | | | | | | | | | | | |
| | (3.4) | 17 | 28 | 34 | 39 | 43 | 47 | 49 | 52 | 54 | 56 | 58 | 59 | 61 | 62 | 63 | 65 | 65 | | | | | | | | | | | | |
| 4.0 | 12050 | 11350 | 11350 | 11150 | 10550 | 10050 | 9650 | 9150 | 8750 | 8400 | 8050 | 7750 | 7500 | 7250 | 7000 | 6650 | 6600 | 6450 | 6350 | | | | | | | | | | | |
| | (3.8) | 17 | 27 | 33 | 38 | 42 | 45 | 48 | 51 | 53 | 55 | 56 | 58 | 59 | 61 | 62 | 63 | 64 | 65 | | | | | | | | | | | |
| 5.0 | | | 10450 | 9200 | 8750 | 8750 | 8700 | 8250 | 7900 | 7650 | 7350 | 7100 | 6800 | 6600 | 6350 | 6150 | 5850 | 5800 | 5700 | 5600 | 5500 | 5400 | 5300 | 5200 | 5100 | | | | | |
| | | | (4.3) | (4.8) | 16 | 25 | 31 | 36 | 40 | 43 | 46 | 48 | 50 | 52 | 54 | 56 | 58 | 58 | 59 | 61 | 62 | 63 | 63 | 64 | 65 | | | | | |
| 6.0 | | | | | 8200 | 7350 | 7050 | 7050 | 6950 | 6650 | 6400 | 6200 | 6000 | 5850 | 5650 | 5450 | 5200 | 5150 | 5050 | 4950 | 4900 | 4800 | 4700 | 4650 | 4600 | 4500 | | | | |
| | | | | | (5.3) | (5.8) | 15 | 24 | 30 | 34 | 38 | 41 | 44 | 46 | 48 | 50 | 53 | 53 | 55 | 56 | 57 | 58 | 60 | 61 | 61 | 62 | | | | |
| 7.0 | | | | | | | 6600 | 6000 | 5800 | 5800 | 5700 | 5500 | 5300 | 5150 | 5000 | 4850 | 4650 | 4600 | 4500 | 4450 | 4350 | 4300 | 4250 | 4150 | 4100 | 4050 | | | | |
| | | | | | | | (6.3) | (6.8) | 14 | 23 | 28 | 33 | 36 | 39 | 42 | 44 | 48 | 48 | 50 | 52 | 53 | 54 | 56 | 57 | 58 | 59 | | | | |
| 8.0 | | | | | | | | | 5500 | 5050 | 4850 | 4850 | 4750 | 4600 | 4450 | 4300 | 4150 | 4100 | 4050 | 4000 | 3950 | 3900 | 3800 | 3750 | 3700 | 3700 | | | | |
| | | | | | | | | | (7.3) | (7.8) | 13 | 22 | 27 | 31 | 35 | 38 | 42 | 43 | 45 | 47 | 48 | 50 | 51 | 53 | 54 | 55 | | | | |
| 9.0 | | | | | | | | | | | 4650 | 4250 | 4150 | 4150 | 4050 | 3900 | 3700 | 3700 | 3650 | 3600 | 3550 | 3500 | 3450 | 3400 | 3350 | 3350 | | | | |
| | | | | | | | | | | | (8.3) | (8.8) | 13 | 21 | 26 | 30 | 35 | 36 | 39 | 41 | 43 | 45 | 47 | 48 | 50 | 51 | | | | |
| 10 | | | | | | | | | | | | | 3950 | 3650 | 3550 | 3550 | 3350 | 3350 | 3300 | 3250 | 3200 | 3150 | 3100 | 3100 | 3100 | 3050 | | | | |
| | | | | | | | | | | | | | (9.3) | (9.8) | 12 | 20 | 28 | 29 | 32 | 35 | 38 | 40 | 42 | 44 | 45 | 47 | | | | |
| 11 | | | | | | | | | | | | | | | | 3400 | 3200 | 3100 | 3100 | 3050 | 2950 | 2950 | 2900 | 2850 | 2850 | 2800 | 2800 | | | |
| | | | | | | | | | | | | | | | | (10.3) | (10.8) | 17 | 19 | 24 | 28 | 31 | 34 | 37 | 39 | 41 | 42 | | | |
| 12 | | | | | | | | | | | | | | | | | 2850 | 2800 | 2750 | 2800 | 2700 | 2650 | 2650 | 2600 | 2550 | 2550 | | | | |
| | | | | | | | | | | | | | | | | | (11.6) | (11.8) | 12 | 19 | 23 | 27 | 30 | 33 | 36 | 37 | | | | |
| 13 | | | | | | | | | | | | | | | | | | | 2650 | 2500 | 2500 | 2500 | 2500 | 2450 | 2400 | 2400 | 2350 | | | |
| | | | | | | | | | | | | | | | | | | | (12.3) | (12.8) | 11 | 18 | 23 | 27 | 30 | 32 | | | | |
| 14 | | | | | | | | | | | | | | | | | | | | | 2400 | 2300 | 2300 | 2250 | 2200 | 2200 | | | | |
| | | | | | | | | | | | | | | | | | | | | | (13.3) | (13.8) | 11 | 18 | 22 | 25 | | | | |
| 15 | | | | | | | | | | | | | | | | | | | | | | | 2200 | 2100 | 2100 | 2100 | | | | |
| | | | | | | | | | | | | | | | | | | | | | | | (14.3) | (14.8) | 10 | 16 | | | | |
| 15.71 | | | | | | | | | | | | | | | | | | | | | | | | | 2000 | 1950 | | | | |
| | | | | | | | | | | | | | | | | | | | | | | | | | | (15.3) | (15.7) | | | |

NOTE : WEIGHT OF HOOKS, BLOCKS & OTHER LOAD HANDLING DEVICES SHALL BE ADDED TO THE WEIGHT OF THE LOAD

MAC-25 RHINO HOOK LOAD CHART - 10 DEG

LMI DUTY

302

STANDARD 1500 KG COUNTERWEIGHT (PLMXF2009) + EXTRA 2160 DEG COUNTERWEIGHT (PLMXF2019-) ON REAR OF CRANE - SPRING LOCKOUTS ENGAGED

█ RC IN KILOGRAMS FOR SLEW ANGLES OF 10 DEGREES OR LESS EITHER SIDE OF STRAIGHT AHEAD (INDICATED BY GREEN LED ON DASH).
□ BOOM ANGLE - UNDEFLECTED (REF.)

RC ABOVE BOLD RED LINE ARE STRUCTURAL
 RC ARE BASED ON FIRM LEVEL GROUND (1% SLOPE (0.6 DEG) AS PER AS1418.5) WITH TYRES INFLATED AS PER NOTES

NOTE: VALUES IN BRACKETS () ARE ACTUAL RADIUS AT ZERO DEG. BOOM ANGLE.
 RC ARE BASED ON 66.6% STABILITY & STRENGTH

LIFT & CARRY - THE RC SHALL BE CARRIED WITH THE MINIMUM BOOM LENGTH & AS CLOSE TO THE GROUND AS POSSIBLE AT SPEEDS NOT IN EXCESS OF 0.4 m/s (1.44 km/h)

| Radius in Metres | BOOM PIVOT TO HOOK CENTRE - THIRD BOOM RETRACTED (metres) | | | | | | | | | | | | | | | | THIRD BOOM EXTENDING (metres) | | | | | | | | | |
|------------------|---|-------|-------|-------|-------|-------|-------|-------|-------|-------|-------|-------|-------|--------|--------|--------|-------------------------------|--------|--------|--------|--------|--------|--------|--------|-------|-------|
| | 6.45 | 7.00 | 7.50 | 8.00 | 8.50 | 9.00 | 9.50 | 10.00 | 10.50 | 11.00 | 11.50 | 12.00 | 12.50 | 13.00 | 13.50 | 14.00 | 14.65 | 15.00 | 15.50 | 16.00 | 16.50 | 17.00 | 17.50 | 18.00 | 18.50 | 18.75 |
| 1.4 | 15000 | 15000 | 15000 | 15000 | 15000 | 15000 | 15000 | | | | | | | | | | | | | | | | | | | |
| | 51 | 55 | 58 | 60 | 62 | 64 | 65 | | | | | | | | | | | | | | | | | | | |
| 2.0 | 15000 | 15000 | 15000 | 15000 | 15000 | 15000 | 15000 | 15000 | 15000 | 15000 | | | | | | | | | | | | | | | | |
| | 44 | 49 | 52 | 55 | 57 | 59 | 61 | 63 | 64 | 65 | | | | | | | | | | | | | | | | |
| 2.5 | 15000 | 15000 | 15000 | 15000 | 15000 | 15000 | 15000 | 15000 | 15000 | 15000 | 15000 | 15000 | 14200 | | | | | | | | | | | | | |
| | 37 | 43 | 47 | 50 | 53 | 56 | 58 | 59 | 61 | 63 | 64 | 65 | | | | | | | | | | | | | | |
| 3.0 | 15000 | 15000 | 15000 | 15000 | 15000 | 15000 | 15000 | 15000 | 15000 | 15000 | 15000 | 13200 | 12750 | 12300 | | | | | | | | | | | | |
| | 29 | 36 | 41 | 45 | 49 | 52 | 54 | 56 | 58 | 60 | 61 | 62 | 64 | 65 | | | | | | | | | | | | |
| 3.5 | 15000 | 15000 | 15000 | 14950 | 14950 | 14900 | 14900 | 14850 | 14850 | 14800 | 14000 | 12300 | 11850 | 11450 | 11150 | 10800 | | | | | | | | | | |
| | 17 | 29 | 35 | 40 | 44 | 47 | 50 | 52 | 55 | 56 | 58 | 60 | 61 | 62 | 63 | 64 | | | | | | | | | | |
| 4.0 | 13950 | 12950 | 12950 | 12900 | 12900 | 12850 | 12850 | 12800 | 12800 | 12800 | 12750 | 11500 | 11100 | 10750 | 10400 | 10100 | 9750 | 9600 | 9450 | | | | | | | |
| | (3.7) | 18 | 28 | 34 | 39 | 43 | 46 | 49 | 51 | 53 | 55 | 57 | 58 | 60 | 61 | 62 | 63 | 64 | 65 | | | | | | | |
| 5.0 | | 11950 | 10500 | 10000 | 10000 | 10000 | 10000 | 9950 | 9950 | 9950 | 9950 | 9900 | 9800 | 9500 | 9200 | 8900 | 8600 | 8500 | 8350 | 8200 | 8050 | 7900 | 7800 | 7700 | | |
| | | (4.3) | (4.8) | 16 | 26 | 32 | 37 | 40 | 44 | 46 | 49 | 51 | 53 | 54 | 56 | 57 | 59 | 60 | 61 | 62 | 63 | 64 | 65 | 65 | | |
| 6.0 | | | | 9350 | 8400 | 8100 | 8100 | 8050 | 8050 | 8050 | 8050 | 8000 | 8000 | 8000 | 8000 | 7950 | 7650 | 7550 | 7400 | 7300 | 7200 | 7050 | 6950 | 6850 | 6800 | 6650 |
| | | | | (5.3) | (5.8) | 15 | 24 | 30 | 35 | 38 | 42 | 44 | 47 | 49 | 51 | 52 | 54 | 55 | 57 | 58 | 59 | 60 | 61 | 62 | 63 | 63 |
| 7.0 | | | | | | 7600 | 6950 | 6700 | 6700 | 6700 | 6650 | 6650 | 6650 | 6650 | 6650 | 6650 | 6600 | 6650 | 6700 | 6550 | 6450 | 6350 | 6250 | 6200 | 6100 | 6050 |
| | | | | | | (6.3) | (6.8) | 15 | 23 | 29 | 33 | 37 | 40 | 42 | 45 | 47 | 49 | 50 | 52 | 53 | 55 | 56 | 57 | 58 | 59 | 60 |
| 8.0 | | | | | | | | 6350 | 5850 | 5650 | 5650 | 5650 | 5650 | 5600 | 5600 | 5600 | 5650 | 5700 | 5750 | 5750 | 5750 | 5700 | 5600 | 5550 | 5500 | |
| | | | | | | | | (7.3) | (7.8) | 14 | 22 | 28 | 32 | 35 | 38 | 41 | 44 | 45 | 47 | 49 | 50 | 52 | 53 | 54 | 55 | 56 |
| 9.0 | | | | | | | | | | 5400 | 5000 | 4850 | 4850 | 4850 | 4850 | 4800 | 4800 | 4850 | 4900 | 4900 | 4950 | 4950 | 5000 | 5050 | 5050 | 5050 |
| | | | | | | | | | | (8.3) | (8.8) | 13 | 21 | 27 | 31 | 34 | 38 | 39 | 42 | 44 | 46 | 47 | 49 | 50 | 51 | 52 |
| 10 | | | | | | | | | | | | 4600 | 4300 | 4200 | 4200 | 4200 | 4200 | 4200 | 4250 | 4300 | 4300 | 4350 | 4350 | 4400 | 4400 | 4450 |
| | | | | | | | | | | | | (9.3) | (9.8) | 13 | 20 | 26 | 31 | 33 | 36 | 38 | 40 | 42 | 44 | 46 | 47 | 48 |
| 11 | | | | | | | | | | | | | | 4000 | 3750 | 3650 | 3650 | 3700 | 3700 | 3750 | 3800 | 3800 | 3850 | 3850 | 3900 | 3900 |
| | | | | | | | | | | | | | | (10.3) | (10.8) | 12 | 21 | 25 | 29 | 32 | 35 | 37 | 39 | 41 | 43 | 44 |
| 12 | | | | | | | | | | | | | | | | 3500 | 3250 | 3250 | 3300 | 3300 | 3350 | 3400 | 3400 | 3450 | 3450 | 3450 |
| | | | | | | | | | | | | | | | | (11.3) | (11.9) | 12 | 19 | 24 | 28 | 31 | 34 | 36 | 38 | 39 |
| 13 | | | | | | | | | | | | | | | | | | 3100 | 2950 | 2950 | 3000 | 3000 | 3050 | 3050 | 3100 | 3100 |
| | | | | | | | | | | | | | | | | | | (12.3) | (12.8) | 12 | 18 | 23 | 27 | 30 | 33 | 34 |
| 14 | | | | | | | | | | | | | | | | | | | | 2850 | 2700 | 2700 | 2700 | 2750 | 2800 | 2800 |
| | | | | | | | | | | | | | | | | | | | | (13.3) | (13.8) | 11 | 18 | 23 | 26 | 28 |
| 15 | | | | | | | | | | | | | | | | | | | | | 2600 | 2500 | 2450 | 2500 | 2500 | |
| | | | | | | | | | | | | | | | | | | | | | (14.3) | (14.8) | 11 | 17 | 20 | |
| 16 | | | | | | | | | | | | | | | | | | | | | | | 2400 | 2300 | 2250 | |
| | | | | | | | | | | | | | | | | | | | | | | | (15.3) | (15.8) | (16.) | |

NOTE : WEIGHT OF HOOKS, BLOCKS & OTHER LOAD HANDLING DEVICES SHALL BE ADDED TO THE WEIGHT OF THE LOAD

MAC-25 RHINO HOOK LOAD CHART - 40 DEG

LMI DUTY

302

STANDARD 1500 KG COUNTERWEIGHT (PLMXF2009) + EXTRA 2160 KG COUNTERWEIGHT (PLMXF2019-) ON REAR OF CRANE - SPRING LOCKOUTS ENGAGED

RC IN KILOGRAMS FOR SLEW ANGLES OF GREATER THAN 10 DEGREES UP TO 40 DEGREES EITHER SIDE OF STRAIGHT AHEAD (INDICATED BY RED LED ON DASH).
BOOM ANGLE - UNDEFLECTED (REF.)

RC ABOVE BOLD RED LINE ARE STRUCTURAL
 RC ARE BASED ON FIRM LEVEL GROUND (1% SLOPE (0.6 DEG) AS PER AS1418.5)
 WITH TYRES INFLATED AS PER NOTES

NOTE: VALUES IN BRACKETS () ARE ACTUAL RADIUS AT ZERO DEG. BOOM ANGLE.
 RC ARE BASED ON 66.6% STABILITY & STRENGTH

LIFT & CARRY - THE RC SHALL BE CARRIED WITH THE MINIMUM BOOM LENGTH & AS CLOSE TO THE GROUND AS POSSIBLE AT SPEEDS NOT IN EXCESS OF 0.4 m/s (1.44 km/h)

| Radius in Metres | BOOM PIVOT TO HOOK CENTRE - THIRD BOOM RETRACTED (metres) | | | | | | | | | | | | | | | | THIRD BOOM EXTENDING (metres) | | | | | | | | | |
|------------------|---|-------|-------|-------|-------|-------|-------|-------|-------|-------|-------|-------|-------|-------|-------|-------|-------------------------------|-------|-------|-------|-------|-------|-------|-------|-------|-------|
| | 6.45 | 7.00 | 7.50 | 8.00 | 8.50 | 9.00 | 9.50 | 10.00 | 10.50 | 11.00 | 11.50 | 12.00 | 12.50 | 13.00 | 13.50 | 14.00 | 14.65 | 15.00 | 15.50 | 16.00 | 16.50 | 17.00 | 17.50 | 18.00 | 18.50 | 18.75 |
| 1.4 | 15000 | 15000 | 15000 | 15000 | 15000 | 14350 | 13700 | | | | | | | | | | | | | | | | | | | |
| | 51 | 55 | 58 | 60 | 62 | 64 | 65 | | | | | | | | | | | | | | | | | | | |
| 2.0 | 15000 | 15000 | 15000 | 14900 | 14000 | 13250 | 12600 | 12050 | 11550 | 11050 | | | | | | | | | | | | | | | | |
| | 44 | 49 | 52 | 55 | 57 | 59 | 61 | 63 | 64 | 65 | | | | | | | | | | | | | | | | |
| 2.5 | 15000 | 15000 | 15000 | 14100 | 13200 | 12450 | 11800 | 11250 | 10750 | 10300 | 9900 | 9550 | | | | | | | | | | | | | | |
| | 37 | 43 | 47 | 50 | 53 | 56 | 58 | 59 | 61 | 63 | 64 | 65 | | | | | | | | | | | | | | |
| 3.0 | 15000 | 15000 | 14150 | 13350 | 12450 | 11700 | 11050 | 10550 | 10050 | 9650 | 9250 | 8950 | 8600 | 8350 | | | | | | | | | | | | |
| | 29 | 36 | 41 | 45 | 49 | 52 | 54 | 56 | 58 | 60 | 61 | 62 | 64 | 65 | | | | | | | | | | | | |
| 3.5 | 13400 | 13400 | 13000 | 12250 | 11600 | 11000 | 10400 | 9850 | 9400 | 9000 | 8650 | 8350 | 8050 | 7800 | 7550 | 7300 | | | | | | | | | | |
| | 17 | 29 | 35 | 40 | 44 | 47 | 50 | 52 | 55 | 56 | 58 | 60 | 61 | 62 | 63 | 64 | | | | | | | | | | |
| 4.0 | 12400 | 11500 | 11500 | 11300 | 10650 | 10150 | 9750 | 9250 | 8850 | 8450 | 8100 | 7800 | 7550 | 7300 | 7050 | 6850 | 6600 | 6500 | 6350 | | | | | | | |
| | (3.7) | 18 | 28 | 34 | 39 | 43 | 46 | 49 | 51 | 53 | 55 | 57 | 58 | 60 | 61 | 62 | 63 | 64 | 65 | | | | | | | |
| 5.0 | 10600 | 9300 | 8900 | 8850 | 8800 | 8350 | 8000 | 7700 | 7450 | 7150 | 6900 | 6650 | 6400 | 6200 | 6050 | 5800 | 5700 | 5600 | 5500 | 5400 | 5300 | 5200 | 5150 | | | |
| | (4.3) | (4.8) | 16 | 26 | 32 | 37 | 40 | 44 | 46 | 49 | 51 | 53 | 54 | 56 | 57 | 59 | 60 | 61 | 62 | 63 | 64 | 65 | 65 | | | |
| 6.0 | | | | 8300 | 7400 | 7100 | 7100 | 7050 | 6750 | 6500 | 6250 | 6050 | 5900 | 5700 | 5500 | 5350 | 5150 | 5100 | 5000 | 4900 | 4800 | 4750 | 4650 | 4600 | 4500 | 4500 |
| | | | | (5.3) | (5.8) | 15 | 24 | 30 | 35 | 38 | 42 | 44 | 47 | 49 | 51 | 52 | 54 | 55 | 57 | 58 | 59 | 60 | 61 | 62 | 63 | 63 |
| 7.0 | | | | | | 6700 | 6100 | 5850 | 5850 | 5750 | 5550 | 5350 | 5200 | 5050 | 4900 | 4750 | 4600 | 4550 | 4450 | 4400 | 4300 | 4250 | 4200 | 4100 | 4050 | 4050 |
| | | | | | | (6.3) | (6.8) | 15 | 23 | 29 | 33 | 37 | 40 | 42 | 45 | 47 | 49 | 50 | 52 | 53 | 55 | 56 | 57 | 58 | 59 | 60 |
| 8.0 | | | | | | | | | | 5550 | 5100 | 4950 | 4800 | 4650 | 4500 | 4350 | 4250 | 4100 | 4050 | 4000 | 3950 | 3900 | 3850 | 3800 | 3700 | 3650 |
| | | | | | | | | | | (7.3) | (7.8) | 14 | 22 | 28 | 32 | 35 | 38 | 41 | 44 | 45 | 47 | 49 | 50 | 52 | 53 | 56 |
| 9.0 | | | | | | | | | | | | | | | | | | | | | | | | | | |
| | | | | | | | | | | | | | | | | | | | | | | | | | | |
| 10 | | | | | | | | | | | | | | | | | | | | | | | | | | |
| | | | | | | | | | | | | | | | | | | | | | | | | | | |
| 11 | | | | | | | | | | | | | | | | | | | | | | | | | | |
| | | | | | | | | | | | | | | | | | | | | | | | | | | |
| 12 | | | | | | | | | | | | | | | | | | | | | | | | | | |
| | | | | | | | | | | | | | | | | | | | | | | | | | | |
| 13 | | | | | | | | | | | | | | | | | | | | | | | | | | |
| | | | | | | | | | | | | | | | | | | | | | | | | | | |
| 14 | | | | | | | | | | | | | | | | | | | | | | | | | | |
| | | | | | | | | | | | | | | | | | | | | | | | | | | |
| 15 | | | | | | | | | | | | | | | | | | | | | | | | | | |
| | | | | | | | | | | | | | | | | | | | | | | | | | | |
| 16 | | | | | | | | | | | | | | | | | | | | | | | | | | |
| | | | | | | | | | | | | | | | | | | | | | | | | | | |

NOTE : WEIGHT OF HOOKS, BLOCKS & OTHER LOAD HANDLING DEVICES SHALL BE ADDED TO THE WEIGHT OF THE LOAD

MAC-25 OFFSET HEAD BOTTOM POSITION LOAD CHART - 10 DEG

LMI DUTY

303

STANDARD 1500 KG COUNTERWEIGHT (PLMXF2009) + EXTRA 2160 KG COUNTERWEIGHT (PLMXF2019-) ON REAR OF CRANE - SPRING LOCKOUTS ENGAGED

█ RC IN KILOGRAMS FOR SLEW ANGLES OF 10 DEGREES OR LESS EITHER SIDE OF STRAIGHT AHEAD (INDICATED BY GREEN LED ON DASH).
□ BOOM ANGLE - UNDEFLECTED (REF.)

RC ABOVE BOLD RED LINE ARE STRUCTURAL
 RC ARE BASED ON FIRM LEVEL GROUND (1% SLOPE (0.6 DEG) AS PER AS1418.5) WITH TYRES INFLATED AS PER NOTES

NOTE: VALUES IN BRACKETS () ARE ACTUAL RADIUS AT ZERO DEG. BOOM ANGLE.
 RC ARE BASED ON 66.6% STABILITY & STRENGTH

LIFT & CARRY - THE RC SHALL BE CARRIED WITH THE MINIMUM BOOM LENGTH & AS CLOSE TO THE GROUND AS POSSIBLE AT SPEEDS NOT IN EXCESS OF 0.4 m/s (1.44 km/h)

| Radius in Metres | BOOM PIVOT TO EDGE OF SHEAVE - THIRD BOOM RETRACTED (metres) | | | | | | | | | | | | | | | | THIRD BOOM EXTENDING (metres) | | | | | | | | | |
|------------------|--|-------|-------|-------|-------|-------|-------|-------|-------|-------|-------|--------|--------|-------|--------|--------|-------------------------------|--------|--------|--------|-------|--|--------|--------|--------|-------|
| | 6.86 | 7.00 | 7.50 | 8.00 | 8.50 | 9.00 | 9.50 | 10.00 | 10.50 | 11.00 | 11.50 | 12.00 | 12.50 | 13.00 | 13.50 | 14.00 | 14.50 | 15.06 | 15.50 | 16.00 | 16.50 | 17.00 | 17.50 | 18.00 | 18.50 | 19.16 |
| 1.4 | 8400 | 8400 | 8400 | 8400 | 8400 | 8400 | | | | | | | | | | | | | | | | | | | | |
| | 55 | 56 | 59 | 61 | 63 | 65 | | | | | | | | | | | | | | | | | | | | |
| 2.0 | 8400 | 8400 | 8400 | 8400 | 8400 | 8400 | 8400 | 8400 | 8400 | | | | | | | | | | | | | WINCH RC SINGLE PART 4200 TWO PARTS 8400 | | | | |
| | 49 | 50 | 53 | 56 | 58 | 60 | 62 | 64 | 65 | | | | | | | | | | | | | | | | | |
| 2.5 | 8400 | 8400 | 8400 | 8400 | 8400 | 8400 | 8400 | 8400 | 8400 | 8400 | 8400 | | | | | | | | | | | | | | | |
| | 43 | 44 | 48 | 51 | 54 | 56 | 58 | 60 | 62 | 63 | 65 | | | | | | | | | | | | | | | |
| 3.0 | 8400 | 8400 | 8400 | 8400 | 8400 | 8400 | 8400 | 8400 | 8400 | 8400 | 8400 | 8400 | 8400 | | | | | | | | | | | | | |
| | 36 | 38 | 43 | 46 | 50 | 52 | 55 | 57 | 59 | 60 | 62 | 63 | 64 | 65 | | | | | | | | | | | | |
| 3.5 | 8400 | 8400 | 8400 | 8400 | 8400 | 8400 | 8400 | 8400 | 8400 | 8400 | 8400 | 8400 | 8400 | 8400 | 8400 | | | | | | | | | | | |
| | 27 | 30 | 36 | 41 | 45 | 48 | 51 | 53 | 55 | 57 | 59 | 60 | 62 | 63 | 64 | 65 | | | | | | | | | | |
| 4.0 | 8400 | 8400 | 8400 | 8400 | 8400 | 8400 | 8400 | 8400 | 8400 | 8400 | 8400 | 8400 | 8400 | 8400 | 8400 | 8400 | 8400 | | | | | | | | | |
| | (4.2) | 19 | 29 | 35 | 40 | 44 | 47 | 50 | 52 | 54 | 56 | 58 | 59 | 60 | 62 | 63 | 64 | 65 | | | | | | | | |
| 5.0 | | 8400 | 8400 | 8400 | 8400 | 8400 | 8400 | 8400 | 8400 | 8400 | 8400 | 8400 | 8400 | 8400 | 8400 | 8400 | 8400 | 8400 | 8400 | 8400 | 8350 | 8250 | 8100 | 8000 | | |
| | | (4.3) | (4.8) | 18 | 27 | 33 | 38 | 41 | 44 | 47 | 49 | 52 | 53 | 55 | 57 | 58 | 59 | 61 | 61 | 62 | 63 | 64 | 65 | | | |
| 6.0 | | | | 8400 | 8400 | 8200 | 8200 | 8200 | 8150 | 8150 | 8150 | 8100 | 8100 | 8100 | 8100 | 8050 | 7950 | 7700 | 7600 | 7450 | 7350 | 7200 | 7100 | 7000 | 6500 | 5850 |
| | | | | (5.3) | (5.8) | 17 | 25 | 31 | 36 | 39 | 42 | 45 | 47 | 49 | 51 | 53 | 54 | 56 | 57 | 58 | 59 | 60 | 61 | 62 | 63 | 64 |
| 7.0 | | | | | 7700 | 7050 | 6800 | 6800 | 6800 | 6750 | 6750 | 6750 | 6750 | 6700 | 6700 | 6700 | 6700 | 6700 | 6700 | 6700 | 6600 | 6500 | 6400 | 6300 | 6100 | 6050 |
| | | | | | (6.3) | (6.8) | 16 | 24 | 30 | 34 | 37 | 40 | 43 | 45 | 47 | 49 | 51 | 52 | 54 | 55 | 56 | 57 | 59 | 59 | 61 | |
| 8.0 | | | | | | | 6450 | 5900 | 5750 | 5750 | 5700 | 5700 | 5700 | 5700 | 5700 | 5700 | 5650 | 5700 | 5750 | 5800 | 5800 | 5800 | 5700 | 5650 | 5150 | |
| | | | | | | | (7.3) | (7.8) | 15 | 23 | 28 | 33 | 36 | 39 | 41 | 44 | 46 | 48 | 49 | 51 | 52 | 53 | 55 | 56 | 57 | |
| 9.0 | | | | | | | | | 5450 | 5050 | 4900 | 4900 | 4900 | 4900 | 4900 | 4900 | 4900 | 4900 | 4900 | 4950 | 5000 | 5000 | 5050 | 5050 | 4850 | |
| | | | | | | | | | (8.3) | (8.8) | 14 | 22 | 27 | 31 | 35 | 37 | 40 | 42 | 44 | 46 | 48 | 49 | 51 | 52 | 53 | |
| 10 | | | | | | | | | | | 4700 | 4350 | 4250 | 4250 | 4250 | 4250 | 4250 | 4250 | 4250 | 4300 | 4350 | 4350 | 4400 | 4400 | 4450 | 4450 |
| | | | | | | | | | | | (9.3) | (9.8) | 14 | 21 | 26 | 30 | 34 | 36 | 39 | 41 | 43 | 45 | 46 | 48 | 50 | |
| 11 | | | | | | | | | | | | | 4050 | 3800 | 3700 | 3700 | 3700 | 3750 | 3800 | 3800 | 3850 | 3850 | 3900 | 3900 | 3950 | |
| | | | | | | | | | | | | (10.3) | (10.8) | 13 | 20 | 26 | 29 | 32 | 35 | 37 | 40 | 42 | 43 | 45 | | |
| 12 | | | | | | | | | | | | | | | 3550 | 3350 | 3250 | 3300 | 3350 | 3400 | 3400 | 3450 | 3450 | 3500 | 3500 | |
| | | | | | | | | | | | | | | | (11.3) | (11.8) | 14 | 20 | 24 | 28 | 31 | 34 | 36 | 39 | 41 | |
| 13 | | | | | | | | | | | | | | | | | 3100 | 3000 | 2950 | 3000 | 3050 | 3050 | 3100 | 3100 | 3150 | |
| | | | | | | | | | | | | | | | | (12.4) | (12.8) | 12 | 19 | 24 | 27 | 30 | 33 | 36 | | |
| 14 | | | | | | | | | | | | | | | | | | | 2850 | 2750 | 2700 | 2750 | 2800 | 2800 | 2800 | |
| | | | | | | | | | | | | | | | | | | (13.3) | (13.8) | 12 | 18 | 23 | 27 | 30 | | |
| 15 | | | | | | | | | | | | | | | | | | | | 2600 | 2500 | 2500 | 2500 | 2550 | | |
| | | | | | | | | | | | | | | | | | | | (14.3) | (14.8) | 12 | 18 | 24 | 24 | | |
| 16.4 | | | | | | | | | | | | | | | | | | | | | | | 2400 | 2300 | 2200 | |
| | | | | | | | | | | | | | | | | | | | | | | | (15.3) | (15.8) | (16.4) | |

MAC-25 OFFSET HEAD BOTTOM POSITION LOAD CHART - 40 DEG

LMI DUTY

303

STANDARD 1500 KG COUNTERWEIGHT (PLMXF2009) + EXTRA 2160 KG COUNTERWEIGHT (PLMXF2019) ON REAR OF CRANE - SPRING LOCKOUTS ENGAGED



RC IN KILOGRAMS FOR SLEW ANGLES OF GREATER THAN 10 DEGREES UP TO 40 DEGREES EITHER SIDE OF STRAIGHT AHEAD (INDICATED BY RED LED ON DASH).



BOOM ANGLE - UNDEFLECTED (REF.)

NOTE: VALUES IN BRACKETS () ARE ACTUAL RADIUS AT ZERO DEG. BOOM ANGLE.
RC ARE BASED ON 66.6% STABILITY & STRENGTH

RC ABOVE BOLD RED LINE ARE STRUCTURAL

RC ARE BASED ON FIRM LEVEL GROUND (1% SLOPE (0.6 DEG) AS PER AS1418.5)

WITH TYRES INFLATED AS PER NOTES

LIFT & CARRY - THE RC SHALL BE CARRIED WITH THE MINIMUM BOOM LENGTH & AS CLOSE TO THE GROUND AS POSSIBLE AT SPEEDS NOT IN EXCESS OF 0.4 m/s (1.44 km/h)

| Radius in Metres | BOOM PIVOT TO EDGE OF SHEAVE - THIRD BOOM RETRACTED (metres) | | | | | | | | | | | | | | | THIRD BOOM EXTENDING (metres) | | | | | | | | | | |
|------------------|--|-------|-------|-------|-------|-------|-------|-------|-------|--------|--------|-------|--------|--------|-------|-------------------------------|--------|--------|--------|--------|--------|--------|--------|-------|-------|-------|
| | 6.86 | 7.00 | 7.50 | 8.00 | 8.50 | 9.00 | 9.50 | 10.00 | 10.50 | 11.00 | 11.50 | 12.00 | 12.50 | 13.00 | 13.50 | 14.00 | 14.50 | 15.06 | 15.50 | 16.00 | 16.50 | 17.00 | 17.50 | 18.00 | 18.50 | 19.16 |
| 1.4 | 8400 | 8400 | 8400 | 8400 | 8400 | 8400 | | | | | | | | | | | | | | | | | | | | |
| | 55 | 56 | 59 | 61 | 63 | 65 | | | | | | | | | | | | | | | | | | | | |
| 2.0 | 8400 | 8400 | 8400 | 8400 | 8400 | 8400 | 8400 | 8400 | 8400 | | | | | | | | | | | | | | | | | |
| | 49 | 50 | 53 | 56 | 58 | 60 | 62 | 64 | 65 | | | | | | | | | | | | | | | | | |
| 2.5 | 8400 | 8400 | 8400 | 8400 | 8400 | 8400 | 8400 | 8400 | 8400 | 8400 | | | | | | | | | | | | | | | | |
| | 43 | 44 | 48 | 51 | 54 | 56 | 58 | 60 | 62 | 63 | 65 | | | | | | | | | | | | | | | |
| 3.0 | 8400 | 8400 | 8400 | 8400 | 8400 | 8400 | 8400 | 8400 | 8400 | 8400 | 8400 | 8400 | 8400 | | | | | | | | | | | | | |
| | 36 | 38 | 43 | 46 | 50 | 52 | 55 | 57 | 59 | 60 | 62 | 63 | 64 | 65 | | | | | | | | | | | | |
| 3.5 | 8400 | 8400 | 8400 | 8400 | 8400 | 8400 | 8400 | 8400 | 8400 | 8400 | 8400 | 8400 | 8150 | 7850 | 7600 | 7400 | | | | | | | | | | |
| | 27 | 30 | 36 | 41 | 45 | 48 | 51 | 53 | 55 | 57 | 59 | 60 | 62 | 63 | 64 | 65 | | | | | | | | | | |
| 4.0 | 8400 | 8400 | 8400 | 8400 | 8400 | 8400 | 8400 | 8400 | 8400 | 8400 | 8200 | 7900 | 7650 | 7400 | 7150 | 6900 | 6700 | 6500 | | | | | | | | |
| | (4.2) | 19 | 29 | 35 | 40 | 44 | 47 | 50 | 52 | 54 | 56 | 58 | 59 | 60 | 62 | 63 | 64 | 65 | | | | | | | | |
| 5.0 | 8400 | 8400 | 8400 | 8400 | 8400 | 8400 | 8400 | 8150 | 7850 | 7550 | 7250 | 7000 | 6750 | 6500 | 6300 | 6100 | 5950 | 5750 | 5650 | 5550 | 5450 | 5350 | 5250 | | | |
| | (4.3) | (4.8) | 18 | 27 | 33 | 38 | 41 | 44 | 47 | 49 | 52 | 53 | 55 | 57 | 58 | 59 | 61 | 61 | 62 | 63 | 64 | 65 | | | | |
| 6.0 | | | 8400 | 7550 | 7250 | 7250 | 7150 | 6850 | 6600 | 6350 | 6150 | 6000 | 5750 | 5600 | 5400 | 5250 | 5100 | 5000 | 4950 | 4850 | 4750 | 4700 | 4600 | 4550 | 4450 | |
| | | | (5.3) | (5.8) | 17 | 25 | 31 | 36 | 39 | 42 | 45 | 47 | 49 | 51 | 53 | 54 | 56 | 57 | 58 | 59 | 60 | 61 | 62 | 63 | 64 | |
| 7.0 | | | | 6800 | 6200 | 5950 | 5950 | 5850 | 5650 | 5450 | 5250 | 5100 | 5000 | 4850 | 4700 | 4550 | 4500 | 4400 | 4350 | 4300 | 4200 | 4150 | 4100 | 4000 | | |
| | | | | (6.3) | (6.8) | 16 | 24 | 30 | 34 | 37 | 40 | 43 | 45 | 47 | 49 | 51 | 52 | 54 | 55 | 56 | 57 | 59 | 59 | 61 | | |
| 8.0 | | | | | | 5650 | 5150 | 5000 | 5000 | 4900 | 4700 | 4550 | 4450 | 4300 | 4200 | 4100 | 4050 | 3950 | 3900 | 3850 | 3800 | 3750 | 3700 | 3650 | | |
| | | | | | | (7.3) | (7.8) | 15 | 23 | 28 | 33 | 36 | 39 | 41 | 44 | 46 | 48 | 49 | 51 | 52 | 53 | 55 | 56 | 57 | | |
| 9.0 | | | | | | | | 4750 | 4400 | 4250 | 4250 | 4150 | 4000 | 3900 | 3800 | 3650 | 3650 | 3600 | 3550 | 3500 | 3450 | 3400 | 3350 | 3300 | | |
| | | | | | | | | (8.3) | (8.8) | 14 | 22 | 27 | 31 | 35 | 37 | 40 | 42 | 44 | 46 | 48 | 49 | 51 | 52 | 53 | | |
| 10 | | | | | | | | | 4050 | 3800 | 3700 | 3700 | 3550 | 3450 | 3300 | 3300 | 3250 | 3200 | 3150 | 3150 | 3100 | 3050 | 3000 | | | |
| | | | | | | | | | (9.3) | (9.8) | 14 | 21 | 26 | 30 | 34 | 36 | 39 | 41 | 43 | 45 | 46 | 48 | 50 | | | |
| 11 | | | | | | | | | | 3500 | 3250 | 3200 | 3200 | 3050 | 3000 | 2950 | 2900 | 2900 | 2850 | 2850 | 2800 | 2750 | 2700 | | | |
| | | | | | | | | | | (10.3) | (10.8) | 13 | 20 | 26 | 29 | 32 | 35 | 37 | 40 | 42 | 43 | 45 | 45 | | | |
| 12 | | | | | | | | | | | | | 3050 | 2850 | 2800 | 2800 | 2750 | 2700 | 2650 | 2600 | 2600 | 2550 | 2550 | | | |
| | | | | | | | | | | | | | (11.3) | (11.8) | 14 | 20 | 24 | 28 | 31 | 34 | 36 | 39 | 41 | | | |
| 13 | | | | | | | | | | | | | | | | 2650 | 2550 | 2500 | 2500 | 2450 | 2400 | 2400 | 2350 | 2350 | | |
| | | | | | | | | | | | | | | | | (12.4) | (12.8) | 12 | 19 | 24 | 27 | 30 | 33 | 36 | | |
| 14 | | | | | | | | | | | | | | | | | 2400 | 2300 | 2300 | 2300 | 2250 | 2200 | 2150 | | | |
| | | | | | | | | | | | | | | | | | (13.3) | (13.8) | 12 | 18 | 23 | 27 | 30 | | | |
| 15 | | | | | | | | | | | | | | | | | | | 2200 | 2100 | 2100 | 2100 | 2000 | | | |
| | | | | | | | | | | | | | | | | | | | (14.3) | (14.8) | 12 | 18 | 24 | | | |
| 16.4 | | | | | | | | | | | | | | | | | | | | | 2000 | 1950 | 1850 | | | |
| | | | | | | | | | | | | | | | | | | | | | (15.3) | (15.8) | (16.4) | | | |

NOTE: WEIGHT OF HOOKS, BLOCKS & OTHER LOAD HANDLING DEVICES SHALL BE ADDED TO THE WEIGHT OF THE LOAD

MAC-25 OFFSET HEAD TOP POSITION LOAD CHART - 10 DEG

LMI DUTY

304

STANDARD 1500 KG COUNTERWEIGHT (PLMXF2009) + EXTRA 2160 KG COUNTERWEIGHT (PLMXF2019-) ON REAR OF CRANE - SPRING LOCKOUTS ENGAGED

RC IN KILOGRAMS FOR SLEW ANGLES OF 10 DEGREES OR LESS EITHER SIDE OF STRAIGHT AHEAD (INDICATED BY GREEN LED ON DASH).
BOOM ANGLE - UNDEFLECTED (REF.)

RC ABOVE BOLD RED LINE ARE STRUCTURAL
 RC ARE BASED ON FIRM LEVEL GROUND (1% SLOPE (0.6 DEG) AS PER AS1418.5) WITH TYRES INFLATED AS PER NOTES

NOTE: VALUES IN BRACKETS () ARE ACTUAL RADIUS AT ZERO DEG. BOOM ANGLE.
 RC ARE BASED ON 66.6% STABILITY & STRENGTH

LIFT & CARRY - THE RC SHALL BE CARRIED WITH THE MINIMUM BOOM LENGTH & AS CLOSE TO THE GROUND AS POSSIBLE AT SPEEDS NOT IN EXCESS OF 0.4 m/s (1.44 km/h)

| Radius in Metres | BOOM PIVOT TO EDGE OF SHEAVE - THIRD BOOM RETRACTED (metres) | | | | | | | | | | | | | | | | | THIRD BOOM EXTENDING (metres) | | | | | | | | | | |
|------------------|--|------|------|------|------|------|------|-------|-------|-------|-------|-------|-------|-------|-------|-------|-------|-------------------------------|-------|-------|-------|-------|-------|-------|-------|-------|--|--|
| | 6.82 | 7.00 | 7.50 | 8.00 | 8.50 | 9.00 | 9.50 | 10.00 | 10.50 | 11.00 | 11.50 | 12.00 | 12.50 | 13.00 | 13.50 | 14.00 | 14.50 | 15.02 | 15.50 | 16.00 | 16.50 | 17.00 | 17.50 | 18.00 | 18.50 | 19.12 | | |
| 1.4 | 8400 | 8400 | 8400 | 8400 | 8400 | 8400 | 8400 | | | | | | | | | | | | | | | | | | | | | |
| 2.0 | 8400 | 8400 | 8400 | 8400 | 8400 | 8400 | 8400 | 8400 | 8400 | 8400 | | | | | | | | | | | | | | | | | | |
| 2.5 | 8400 | 8400 | 8400 | 8400 | 8400 | 8400 | 8400 | 8400 | 8400 | 8400 | 8400 | 8400 | 8400 | 8400 | | | | | | | | | | | | | | |
| 3.0 | 8400 | 8400 | 8400 | 8400 | 8400 | 8400 | 8400 | 8400 | 8400 | 8400 | 8400 | 8400 | 8400 | 8400 | 8400 | 8400 | | | | | | | | | | | | |
| 3.5 | 8400 | 8400 | 8400 | 8400 | 8400 | 8400 | 8400 | 8400 | 8400 | 8400 | 8400 | 8400 | 8400 | 8400 | 8400 | 8400 | 8400 | | | | | | | | | | | |
| 4.0 | 8400 | 8400 | 8400 | 8400 | 8400 | 8400 | 8400 | 8400 | 8400 | 8400 | 8400 | 8400 | 8400 | 8400 | 8400 | 8400 | 8400 | 8400 | 8400 | | | | | | | | | |
| 5.0 | 8400 | 8400 | 8400 | 8400 | 8400 | 8400 | 8400 | 8400 | 8400 | 8400 | 8400 | 8400 | 8400 | 8400 | 8400 | 8400 | 8400 | 8400 | 8400 | 8400 | 8400 | 8300 | 8200 | 8050 | 7950 | | | |
| 6.0 | 8400 | 8400 | 8400 | 8400 | 8400 | 8150 | 8150 | 8150 | 8100 | 8100 | 8050 | 8050 | 8050 | 8050 | 8000 | 8000 | 8000 | 7800 | 7650 | 7500 | 7400 | 7250 | 7150 | 7050 | 6950 | 6300 | | |
| 7.0 | | | | | 7700 | 7000 | 6750 | 6750 | 6750 | 6700 | 6700 | 6700 | 6650 | 6650 | 6650 | 6650 | 6650 | 6650 | 6650 | 6700 | 6650 | 6500 | 6450 | 6350 | 6250 | 5850 | | |
| 8.0 | | | | | | | | | | | | | | | | | | | | | | | | | | | | |
| 9.0 | | | | | | | | | | | | | | | | | | | | | | | | | | | | |
| 10 | | | | | | | | | | | | | | | | | | | | | | | | | | | | |
| 11 | | | | | | | | | | | | | | | | | | | | | | | | | | | | |
| 12 | | | | | | | | | | | | | | | | | | | | | | | | | | | | |
| 13 | | | | | | | | | | | | | | | | | | | | | | | | | | | | |
| 14 | | | | | | | | | | | | | | | | | | | | | | | | | | | | |
| 15 | | | | | | | | | | | | | | | | | | | | | | | | | | | | |
| 16.45 | | | | | | | | | | | | | | | | | | | | | | | | | | | | |

MAC-25 OFFSET HEAD TOP POSITION LOAD CHART - 40 DEG

LMI DUTY

304

STANDARD 1500 KG COUNTERWEIGHT (PLMXF2009) + EXTRA 2160 KG COUNTERWEIGHT (PLMXF2019-) ON REAR OF CRANE - SPRING LOCKOUTS ENGAGED

RC IN KILOGRAMS FOR SLEW ANGLES OF GREATER THAN 10 DEGREES UP TO 40 DEGREES EITHER SIDE OF STRAIGHT AHEAD (INDICATED BY RED LED ON DASH).
BOOM ANGLE - UNDEFLECTED (REF.)

RC ABOVE BOLD RED LINE ARE STRUCTURAL
 RC ARE BASED ON FIRM LEVEL GROUND (1% SLOPE (0.6 DEG) AS PER AS1418.5) WITH TYRES INFLATED AS PER NOTES

NOTE: VALUES IN BRACKETS () ARE ACTUAL RADIUS AT ZERO DEG. BOOM ANGLE.
 RC ARE BASED ON 66.6% STABILITY & STRENGTH

LIFT & CARRY - THE RC SHALL BE CARRIED WITH THE MINIMUM BOOM LENGTH & AS CLOSE TO THE GROUND AS POSSIBLE AT SPEEDS NOT IN EXCESS OF 0.4 m/s (1.44 km/h)

| Radius in Metres | BOOM PIVOT TO EDGE OF SHEAVE - THIRD BOOM RETRACTED (metres) | | | | | | | | | | | | | | | | | THIRD BOOM EXTENDING (metres) | | | | | | | | | | |
|------------------|---|-------|-------|-------|-------|-------|------|-------|-------|-------|-------|-------|-------|--------|--------|--------|--------|----------------------------------|-------|--------|--------|--------------------|--------|-------------|--------|--------|------|--|
| | 6.82 | 7.00 | 7.50 | 8.00 | 8.50 | 9.00 | 9.50 | 10.00 | 10.50 | 11.00 | 11.50 | 12.00 | 12.50 | 13.00 | 13.50 | 14.00 | 14.50 | 15.02 | 15.50 | 16.00 | 16.50 | 17.00 | 17.50 | 18.00 | 18.50 | 19.12 | | |
| 1.4 | 8400 | 8400 | 8400 | 8400 | 8400 | 8400 | 8400 | | | | | | | | | | | | | | | | | | | | | |
| | 52 | 53 | 56 | 58 | 60 | 62 | 64 | | | | | | | | | | | | | | | | | | | | | |
| 2.0 | 8400 | 8400 | 8400 | 8400 | 8400 | 8400 | 8400 | 8400 | 8400 | 8400 | | | | | | | | | | | | WINCH RC | | | | | | |
| | 45 | 47 | 50 | 53 | 56 | 58 | 60 | 61 | 63 | 64 | | | | | | | | | | | | SINGLE PART | | 4200 | | | | |
| 2.5 | 8400 | 8400 | 8400 | 8400 | 8400 | 8400 | 8400 | 8400 | 8400 | 8400 | 8400 | 8400 | | | | | | | | | | TWO PARTS | | 8400 | | | | |
| | 39 | 41 | 45 | 49 | 52 | 54 | 56 | 58 | 60 | 61 | 63 | 64 | | | | | | | | | | | | | | | | |
| 3.0 | 8400 | 8400 | 8400 | 8400 | 8400 | 8400 | 8400 | 8400 | 8400 | 8400 | 8400 | 8400 | 8400 | 8350 | 8100 | | | | | | | | | | | | | |
| | 32 | 34 | 40 | 44 | 47 | 50 | 53 | 55 | 57 | 58 | 60 | 61 | 63 | 64 | 65 | | | | | | | | | | | | | |
| 3.5 | 8400 | 8400 | 8400 | 8400 | 8400 | 8400 | 8400 | 8400 | 8400 | 8400 | 8400 | 8400 | 8100 | 7800 | 7550 | 7350 | 7100 | | | | | | | | | | | |
| | 24 | 27 | 33 | 38 | 42 | 46 | 49 | 51 | 53 | 55 | 57 | 59 | 60 | 61 | 62 | 63 | 64 | | | | | | | | | | | |
| 4.0 | 8400 | 8400 | 8400 | 8400 | 8400 | 8400 | 8400 | 8400 | 8400 | 8150 | 7850 | 7600 | 7300 | 7100 | 6850 | 6650 | 6450 | 6350 | | | | | | | | | | |
| | (4.1) | 16 | 26 | 32 | 37 | 41 | 45 | 47 | 50 | 52 | 54 | 56 | 57 | 59 | 60 | 61 | 62 | 63 | 64 | | | | | | | | | |
| 5.0 | 8400 | 8400 | 8400 | 8400 | 8400 | 8400 | 8400 | 8100 | 7750 | 7500 | 7200 | 6950 | 6700 | 6450 | 6250 | 6050 | 5900 | 5700 | 5600 | 5500 | 5400 | 5300 | 5200 | 5100 | | | | |
| | (4.3) | (4.8) | 15 | 24 | 30 | 35 | 39 | 42 | 45 | 48 | 50 | 52 | 53 | 55 | 56 | 58 | 59 | 60 | 61 | 62 | 63 | 64 | 65 | | | | | |
| 6.0 | | | 8400 | 7500 | 7200 | 7200 | 7100 | 6800 | 6550 | 6300 | 6100 | 5950 | 5750 | 5550 | 5400 | 5200 | 5050 | 5000 | 4900 | 4800 | 4750 | 4650 | 4600 | 4500 | 4400 | | | |
| | | | (5.3) | (5.8) | 14 | 23 | 29 | 34 | 37 | 40 | 43 | 46 | 48 | 50 | 51 | 53 | 54 | 56 | 57 | 58 | 59 | 60 | 61 | 62 | 63 | | | |
| 7.0 | | | | | 6800 | 6150 | 5950 | 5900 | 5850 | 5600 | 5400 | 5250 | 5100 | 4950 | 4800 | 4650 | 4550 | 4450 | 4400 | 4300 | 4250 | 4200 | 4100 | 4050 | 4000 | | | |
| | | | | | (6.3) | (6.8) | 14 | 22 | 28 | 32 | 36 | 39 | 41 | 44 | 46 | 48 | 50 | 51 | 53 | 54 | 55 | 56 | 57 | 58 | 59 | | | |
| 8.0 | | | | | | | | 5650 | 5150 | 5000 | 5000 | 4900 | 4700 | 4550 | 4400 | 4300 | 4150 | 4050 | 4000 | 3950 | 3900 | 3800 | 3750 | 3700 | 3650 | 3600 | | |
| | | | | | | | | (7.3) | (7.8) | 13 | 21 | 27 | 31 | 34 | 37 | 40 | 42 | 44 | 46 | 48 | 49 | 51 | 52 | 53 | 55 | 56 | | |
| 9.0 | | | | | | | | | | | 4750 | 4400 | 4250 | 4250 | 4150 | 4000 | 3850 | 3750 | 3650 | 3600 | 3550 | 3500 | 3450 | 3400 | 3400 | 3350 | 3300 | |
| | | | | | | | | | | | (8.3) | (8.8) | 12 | 20 | 25 | 30 | 33 | 36 | 39 | 41 | 43 | 45 | 46 | 48 | 49 | 51 | 52 | |
| 10 | | | | | | | | | | | | 4050 | 3750 | 3650 | 3650 | 3550 | 3400 | 3300 | 3250 | 3200 | 3200 | 3150 | 3100 | 3100 | 3050 | 3000 | | |
| | | | | | | | | | | | | (9.3) | (9.8) | 12 | 19 | 25 | 29 | 32 | 35 | 37 | 40 | 42 | 43 | 45 | 47 | 48 | | |
| 11 | | | | | | | | | | | | | | 3500 | 3250 | 3150 | 3150 | 3050 | 3000 | 2950 | 2900 | 2850 | 2850 | 2800 | 2800 | 2750 | | |
| | | | | | | | | | | | | | | (10.3) | (10.8) | 12 | 19 | 24 | 28 | 31 | 34 | 36 | 38 | 40 | 42 | 44 | | |
| 12 | | | | | | | | | | | | | | | | 3050 | 2850 | 2750 | 2800 | 2700 | 2650 | 2650 | 2600 | 2550 | 2550 | 2500 | | |
| | | | | | | | | | | | | | | | | (11.3) | (11.8) | 12 | 18 | 23 | 27 | 30 | 33 | 35 | 37 | 40 | | |
| 13 | | | | | | | | | | | | | | | | | 2650 | 2550 | 2500 | 2500 | 2450 | 2400 | 2400 | 2350 | 2300 | | | |
| | | | | | | | | | | | | | | | | | (12.3) | (12.8) | 11 | 18 | 22 | 26 | 29 | 32 | 35 | | | |
| 14 | | | | | | | | | | | | | | | | | | | | 2400 | 2300 | 2300 | 2300 | 2200 | 2200 | 2150 | | |
| | | | | | | | | | | | | | | | | | | | | (13.3) | (13.8) | 11 | 17 | 22 | 25 | 29 | | |
| 15 | | | | | | | | | | | | | | | | | | | | | | 2200 | 2100 | 2100 | 2050 | 2000 | | |
| | | | | | | | | | | | | | | | | | | | | | | (14.3) | (14.8) | 10 | 17 | 22 | | |
| 16.45 | | | | | | | | | | | | | | | | | | | | | | | | 2000 | 1950 | 1850 | | |
| | | | | | | | | | | | | | | | | | | | | | | | | (15.3) | (15.8) | (16.5) | | |

MAC-25 3m FLYJIB TOP POSITION AT 0 DEG OFFSET LOAD CHART

COUNTERWEIGHT ON REAR OF CRANE - SPRING LOCKOUTS ENGAGED

LMI DUTY

305

| PIVOT TO FLY JIB MAX LENGTH 21.4m | |
|--------------------------------------|------|
| MAX RADIUS | SWL |
| 6.10 | 1500 |
| | 65 |
| 7.76 | 1500 |
| | 60 |
| 9.34 | 1200 |
| | 55 |
| 10.83 | 1200 |
| | 50 |
| 12.22 | 970 |
| | 45 |
| 13.49 | 970 |
| | 40 |
| 14.65 | 850 |
| | 35 |
| 15.67 | 850 |
| | 30 |
| 16.55 | 770 |
| | 25 |
| 17.29 | 770 |
| | 20 |
| 17.88 | 750 |
| | 15 |
| 18.31 | 750 |
| | 10 |
| 18.58 | 750 |
| | 5 |
| 18.69 | 750 |
| | 0 |



S.W.L IN KILOGRAMS FOR SLEW ANGLES UP TO 40 DEGREES EITHER SIDE OF STRAIGHT AHEAD (INDICATED BY RED LED ON DASH).



BOOM ANGLE - UNDEFLECTED (REF.)

NOTE : VALUES IN BRACKETS () ARE ACTUAL RADIUS AT ZERO DEG. BOOM ANGLE.

SWL IS AT THIS RADIUS

SPRING LOCKOUTS ARE TO BE ENGAGED FOR ALL LIFTING OPERATIONS

S.W.L. ARE BASED ON 66.6% STABILITY & STRENGTH

ALL FLYJIB S.W.L.'S ARE STRUCTURAL

S.W.L. ARE BASED ON FIRM LEVEL GROUND (1% SLOPE (0.6 DEG) AS PER AS1418.5)

WITH TYRES INFLATED AS PER NOTES

LIFT & CARRY - THE S.W.L. SHALL BE CARRIED WITH THE MINIMUM BOOM LENGTH & AS

CLOSE TO THE GROUND AS POSSIBLE AT SPEEDS NOT IN EXCESS OF 0.4 M/SEC (1.44 KM/HR)

FLYJIB S.W.L.'S AND RADII ARE BASED ON FULLY EXTENDED BOOM.

FOR OPERATION WITH THE BOOM PART OR FULLY RETRACTED

THE SWL WILL BE BASED ON THE BOOM ANGLE, NOT THE ACTUAL RADIUS.

NOTE : WEIGHT OF HOOKS, BLOCKS & OTHER
LOAD HANDLING DEVICES SHALL BE ADDED
TO THE WEIGHT OF THE LOAD

| PIVOT TO FLY JIB MAX LENGTH 21.4m | |
|--|------------|
| MAX RADIUS | SWL |
| 6.60 | 1300 |
| | 65 |
| 8.23 | 1300 |
| | 60 |
| 9.78 | 1120 |
| | 55 |
| 11.24 | 1120 |
| | 50 |
| 12.59 | 920 |
| | 45 |
| 13.83 | 920 |
| | 40 |
| 14.94 | 820 |
| | 35 |
| 15.92 | 820 |
| | 30 |
| 16.76 | 770 |
| | 25 |
| 17.45 | 770 |
| | 20 |
| 17.99 | 750 |
| | 15 |
| 18.37 | 750 |
| | 10 |
| 18.59 | 750 |
| | 5 |
| 18.65 | 750 |
| | 0 |



S.W.L IN KILOGRAMS FOR SLEW ANGLES UP TO 40 DEGREES EITHER SIDE OF STRAIGHT AHEAD (INDICATED BY RED LED ON DASH).



BOOM ANGLE - UNDEFLECTED (REF.)

NOTE: VALUES IN BRACKETS () ARE ACTUAL RADIUS AT ZERO DEG. BOOM ANGLE.
 SWL IS AT THIS RADIUS

SPRING LOCKOUTS ARE TO BE ENGAGED FOR ALL LIFTING OPERATIONS

S.W.L. ARE BASED ON 66.6% STABILITY & STRENGTH

ALL FLYJIB S.W.L.'S ARE STRUCTURAL

S.W.L. ARE BASED ON FIRM LEVEL GROUND (1% SLOPE (0.6 DEG) AS PER AS1418.5)

WITH TYRES INFLATED AS PER NOTES

LIFT & CARRY - THE S.W.L. SHALL BE CARRIED WITH THE MINIMUM BOOM LENGTH & AS CLOSE TO THE GROUND AS POSSIBLE AT SPEEDS NOT IN EXCESS OF 0.4 M/SEC (1.44 KM/HR)

FLYJIB S.W.L.'S AND RADII ARE BASED ON FULLY EXTENDED BOOM.

FOR OPERATION WITH THE BOOM PART OR FULLY RETRACTED

THE SWL WILL BE BASED ON THE BOOM ANGLE, NOT THE ACTUAL RADIUS.

**NOTE : WEIGHT OF HOOKS, BLOCKS & OTHER
 LOAD HANDLING DEVICES SHALL BE ADDED
 TO THE WEIGHT OF THE LOAD**

MAC-25 4m FLYJIB TOP POSITION AT 5 DEG OFFSET LOAD CHART

LMI DUTY

307

COUNTERWEIGHT ON REAR OF CRANE - SPRING LOCKOUTS ENGAGED

| PIVOT TO FLY JIB MAX LENGTH 22.48m | |
|---------------------------------------|-----|
| MAX RADIUS | SWL |
| 6.85 | 700 |
| | 65 |
| 8.58 | 600 |
| | 60 |
| 10.23 | 600 |
| | 55 |
| 11.77 | 600 |
| | 50 |
| 13.21 | 600 |
| | 45 |
| 14.53 | 500 |
| | 40 |
| 15.72 | 500 |
| | 35 |
| 16.77 | 500 |
| | 30 |
| 17.67 | 500 |
| | 25 |
| 18.42 | 500 |
| | 20 |
| 19.00 | 500 |
| | 15 |
| 19.43 | 500 |
| | 10 |
| 19.68 | 500 |
| | 5 |
| 19.77 | 500 |
| | 0 |



S.W.L IN KILOGRAMS FOR SLEW ANGLES UP TO 40 DEGREES EITHER SIDE OF STRAIGHT AHEAD (INDICATED BY RED LED ON DASH).



BOOM ANGLE - UNDEFLECTED (REF.)

NOTE : VALUES IN BRACKETS () ARE ACTUAL RADIUS AT ZERO DEG. BOOM ANGLE.
SWL IS AT THIS RADIUS

SPRING LOCKOUTS ARE TO BE ENGAGED FOR ALL LIFTING OPERATIONS

S.W.L. ARE BASED ON 66.6% STABILITY & STRENGTH

ALL FLYJIB S.W.L.'S ARE STRUCTURAL

S.W.L. ARE BASED ON FIRM LEVEL GROUND (1% SLOPE (0.6 DEG) AS PER AS1418.5)

WITH TYRES INFLATED AS PER NOTES

LIFT & CARRY - THE S.W.L. SHALL BE CARRIED WITH THE MINIMUM BOOM LENGTH & AS CLOSE TO THE GROUND AS POSSIBLE AT SPEEDS NOT IN EXCESS OF 0.4 M/SEC (1.44 KM/HR)

FLYJIB S.W.L.'S AND RADII ARE BASED ON FULLY EXTENDED BOOM.

FOR OPERATION WITH THE BOOM PART OR FULLY RETRACTED

THE SWL WILL BE BASED ON THE BOOM ANGLE, NOT THE ACTUAL RADIUS.

NOTE : WEIGHT OF HOOKS, BLOCKS & OTHER
LOAD HANDLING DEVICES SHALL BE ADDED
TO THE WEIGHT OF THE LOAD

MAC-25 4m FLYJIB BOTTOM POSITION AT 17.5 DEG OFFSET LOAD CHART

LMI DUTY

308

COUNTERWEIGHT ON REAR OF CRANE - SPRING LOCKOUTS ENGAGED

| PIVOT TO FLY JIB MAX LENGTH 22.41m | |
|---------------------------------------|-----|
| MAX RADIUS | SWL |
| 7.82 | 600 |
| | 65 |
| 9.50 | 600 |
| | 60 |
| 11.09 | 600 |
| | 55 |
| 12.57 | 500 |
| | 50 |
| 13.94 | 500 |
| | 45 |
| 15.18 | 500 |
| | 40 |
| 16.29 | 500 |
| | 35 |
| 17.25 | 500 |
| | 30 |
| 18.07 | 500 |
| | 25 |
| 18.72 | 500 |
| | 20 |
| 19.22 | 500 |
| | 15 |
| 19.55 | 500 |
| | 10 |
| 19.70 | 500 |
| | 5 |
| 19.70 | 500 |
| | 0 |



S.W.L IN KILOGRAMS FOR SLEW ANGLES UP TO 40 DEGREES EITHER SIDE OF STRAIGHT AHEAD (INDICATED BY RED LED ON DASH).



BOOM ANGLE - UNDEFLECTED (REF.)

NOTE : VALUES IN BRACKETS () ARE ACTUAL RADIUS AT ZERO DEG. BOOM ANGLE.
SWL IS AT THIS RADIUS

SPRING LOCKOUTS ARE TO BE ENGAGED FOR ALL LIFTING OPERATIONS

S.W.L. ARE BASED ON 66.6% STABILITY & STRENGTH

ALL FLYJIB S.W.L.'S ARE STRUCTURAL

S.W.L. ARE BASED ON FIRM LEVEL GROUND (1% SLOPE (0.6 DEG) AS PER AS1418.5)

WITH TYRES INFLATED AS PER NOTES

LIFT & CARRY - THE S.W.L. SHALL BE CARRIED WITH THE MINIMUM BOOM LENGTH & AS

CLOSE TO THE GROUND AS POSSIBLE AT SPEEDS NOT IN EXCESS OF 0.4 M/SEC (1.44 KM/HR)

FLYJIB S.W.L.'S AND RADII ARE BASED ON FULLY EXTENDED BOOM.

FOR OPERATION WITH THE BOOM PART OR FULLY RETRACTED

THE SWL WILL BE BASED ON THE BOOM ANGLE, NOT THE ACTUAL RADIUS.

NOTE : WEIGHT OF HOOKS, BLOCKS & OTHER
LOAD HANDLING DEVICES SHALL BE ADDED
TO THE WEIGHT OF THE LOAD

MAXIMUM MANBASKET SWL: 275 KG (SEE NOTE BELOW)
BASKET WEIGHT: 225 KG

*Read and understand warning notes before
operating crane*

**NOTE: THE TOTAL WEIGHT OF THE MANBASKET PLUS
MEN AND EQUIPMENT IS NOT TO EXCEED 1/3 OF
THE SAFE WORKING LOAD AS READ ON LOAD
CHART (FALL BLOCK LOAD CHART - DUTY 201)
FOR THE BOOM LENGTH AND RADIUS BEING USED.**

MAC-25 BUTT LUG - 10 DEG. ART.**STANDARD 1500 KG COUNTERWEIGHT (PLMXF2009)****+ EXTRA 2160 KG COUNTERWEIGHT (PLMXF2019-) ON REAR OF CRANE - SPRING LOCKOUTS ENGAGED**

RC IN KILOGRAMS FOR SLEW ANGLES OF 10 DEGREES OR LESS EITHER SIDE OF STRAIGHT AHEAD (INDICATED BY GREEN LED ON DASH).



BOOM ANGLE - UNDEFLECTED (REF.)

NOTE: VALUES IN BRACKETS () ARE ACTUAL RADIUS AT ZERO DEG. BOOM ANGLE. RC IS AT THIS RADIUS**MAC-25 BUTT LUG - 40 DEG. ART.**

RC IN KILOGRAMS FOR SLEW ANGLES OF GREATER THAN 10 DEGREES UP TO 40 DEGREES EITHER SIDE OF STRAIGHT AHEAD (INDICATED BY RED LED ON DASH).



BOOM ANGLE - UNDEFLECTED (REF.)

NOTE: VALUES IN BRACKETS () ARE ACTUAL RADIUS AT ZERO DEG. BOOM ANGLE. RC IS AT THIS RADIUS

RC ARE BASED ON 66.6% STABILITY & STRENGTH - RC ABOVE BOLD RED LINE ARE STRUCTURAL

RC ARE BASED ON FIRM, LEVEL GROUND (1% SLOPE (0.6 DEG) AS PER AS1418.5) WITH TYRES INFLATED AS PER NOTES

LIFT & CARRY - THE RC SHALL BE CARRIED WITH THE MINIMUM BOOM LENGTH & AS CLOSE TO THE GROUND AS POSSIBLE AT SPEEDS NOT IN EXCESS OF 0.4 m/s (1.44 km/h)

NOTE: WEIGHT OF HOOKS, BLOCKS & OTHER LOAD HANDLING DEVICES SHALL BE ADDED TO THE WEIGHT OF THE LOAD

| Radius in Metres | Boom Length (metres) |
|------------------|----------------------|
| | 4.81 |
| 1.4 | 25000 |
| | 32 |
| 1.5 | 25000 |
| | 30 |
| 1.6 | 24650 |
| | 27 |
| 1.7 | 24200 |
| | 24 |
| 1.8 | 23800 |
| | 21 |
| 1.9 | 23400 |
| | 18 |
| 2.1 | 22600 |
| | 0 |

NOTE : WEIGHT OF HOOKS, BLOCKS & OTHER LOAD HANDLING DEVICES SHALL BE ADDED TO THE WEIGHT OF THE LOAD

| Radius in Metres | Boom Length (metres) |
|------------------|----------------------|
| | 4.81 |
| 1.4 | 25000 |
| | 32 |
| 1.5 | 25000 |
| | 30 |
| 1.6 | 24650 |
| | 27 |
| 1.7 | 24200 |
| | 24 |
| 1.8 | 23800 |
| | 21 |
| 1.9 | 23400 |
| | 18 |
| 2.1 | 22050 |
| | 0 |

MAC25 LUG 1 LOAD CHART - 10 DEG. ART.

STANDARD 1500 KG COUNTERWEIGHT (PLMXF2009)

+ EXTRA 2160 KG COUNTERWEIGHT (PLMXF2019-) ON REAR OF CRANE - SPRING LOCKOUTS ENGAGED



RC IN KILOGRAMS FOR SLEW ANGLES OF 10 DEGREES OR LESS EITHER

SIDE OF STRAIGHT AHEAD (INDICATED BY GREEN LED ON DASH).



BOOM ANGLE - UNDEFLECTED (REF.)

NOTE: VALUES IN BRACKETS () ARE ACTUAL RADIUS AT ZERO DEG. BOOM ANGLE
RC IS AT THIS RADIUS

MAC25 LUG 1 LOAD CHART - 40 DEG. ART.



RC IN KILOGRAMS FOR SLEW ANGLES OF GREATER THAN 10 DEGREES UP TO 40

DEGREES EITHER SIDE OF STRAIGHT AHEAD (INDICATED BY RED LED ON DASH).



BOOM ANGLE - UNDEFLECTED (REF.)

NOTE: VALUES IN BRACKETS () ARE ACTUAL RADIUS AT ZERO DEG. BOOM ANGLE
RC IS AT THIS RADIUS

RC ARE BASED ON 66.6% STABILITY & STRENGTH - RC ABOVE BOLD RED LINE ARE STRUCTURAL

RC ARE BASED ON FIRM, LEVEL GROUND (1% SLOPE (0.6 DEG) AS PER AS1418.5) WITH TYRES INFLATED AS PER NOTES

LIFT & CARRY - THE RC SHALL BE CARRIED WITH THE MINIMUM BOOM LENGTH & AS CLOSE TO THE GROUND AS POSSIBLE AT SPEEDS NOT IN EXCESS OF 0.4 m/s (1.44 km/h)

NOTE : WEIGHT OF HOOKS, BLOCKS & OTHER LOAD HANDLING DEVICES SHALL BE ADDED TO THE WEIGHT OF THE LOAD

| RADIUS IN METRES | BOOM PIVOT TO LUG 1, 1st EXTENSION, THIRD EXTENSION RETRACTED (metres) | | | | | | | | | |
|------------------------|---|-------|-------|-------|-------|-------|-------|-------|-------|-------|
| | 5.36 | 5.50 | 6.00 | 6.50 | 7.00 | 7.50 | 8.00 | 8.50 | 9.00 | 9.46 |
| 1.4 | 25000 | 25000 | 25000 | 25000 | 25000 | 25000 | 25000 | 25000 | 25000 | 24000 |
| | 40 | 42 | 47 | 51 | 54 | 57 | 59 | 61 | 63 | 64 |
| 2 | 23900 | 23850 | 23650 | 23500 | 23300 | 23150 | 22950 | 22750 | 22600 | 21350 |
| | 29 | 31 | 38 | 44 | 48 | 51 | 54 | 56 | 59 | 60 |
| 2.5 | 21000 | 20950 | 20700 | 20450 | 20250 | 20050 | 19900 | 19750 | 19600 | 19500 |
| | 14 | 19 | 30 | 37 | 42 | 46 | 49 | 52 | 55 | 57 |
| 3 | 18600 | 18000 | 16900 | 16700 | 16550 | 16400 | 16250 | 16100 | 16000 | 15900 |
| | (2.7) | (2.8) | 18 | 29 | 35 | 41 | 45 | 48 | 51 | 53 |
| 3.5 | | | 15200 | 14050 | 13900 | 13750 | 13600 | 13500 | 13400 | 13300 |
| | | | (3.3) | 17 | 28 | 34 | 39 | 43 | 46 | 49 |
| 4 | | | | 12750 | 11900 | 11750 | 11650 | 11550 | 11450 | 11350 |
| | | | | (3.8) | 17 | 27 | 33 | 38 | 42 | 45 |
| 5 | | | | | 10850 | 9350 | 8850 | 8800 | 8700 | 8650 |
| | | | | | (4.3) | (4.8) | 16 | 25 | 31 | 36 |
| 6 | | | | | | | 8150 | 7150 | 6850 | 6800 |
| | | | | | | | (5.3) | (5.8) | 15 | 23 |
| 6.8 | | | | | | | | | 6300 | 5650 |
| | | | | | | | | | (6.3) | (6.8) |

| RADIUS IN METRES | BOOM PIVOT TO LUG 1, 1st EXTENSION, THIRD EXTENSION RETRACTED (metres) | | | | | | | | | |
|------------------------|---|-------|-------|-------|-------|-------|-------|-------|-------|-------|
| | 5.36 | 5.50 | 6.00 | 6.50 | 7.00 | 7.50 | 8.00 | 8.50 | 9.00 | 9.46 |
| 1.4 | 22600 | 21750 | 19350 | 17600 | 16150 | 15000 | 14000 | 13200 | 12450 | 11800 |
| | 40 | 42 | 47 | 51 | 54 | 57 | 59 | 61 | 63 | 64 |
| 2 | 23800 | 22900 | 18750 | 16600 | 15050 | 13850 | 12850 | 12000 | 11300 | 10700 |
| | 29 | 31 | 38 | 44 | 48 | 51 | 54 | 56 | 59 | 60 |
| 2.5 | 18700 | 18650 | 18400 | 16800 | 14250 | 13000 | 11950 | 11150 | 10450 | 9900 |
| | 14 | 19 | 30 | 37 | 42 | 46 | 49 | 52 | 55 | 57 |
| 3 | 17500 | 16450 | 15000 | 14800 | 13950 | 12950 | 11200 | 10350 | 9650 | 9150 |
| | (2.7) | (2.8) | 18 | 29 | 35 | 41 | 45 | 48 | 51 | 53 |
| 3.5 | | | 13450 | 12400 | 12250 | 11750 | 10950 | 9650 | 8950 | 8450 |
| | | | (3.3) | 17 | 28 | 34 | 39 | 43 | 46 | 49 |
| 4 | | | | 11200 | 10450 | 10350 | 10000 | 9350 | 8800 | 7850 |
| | | | | (3.8) | 17 | 27 | 33 | 38 | 42 | 45 |
| 5 | | | | | 9500 | 8150 | 7700 | 7650 | 7400 | 7000 |
| | | | | | (4.3) | (4.8) | 16 | 25 | 31 | 36 |
| 6 | | | | | | | 7050 | 6150 | 5900 | 5850 |
| | | | | | | | (5.3) | (5.8) | 15 | 23 |
| 6.8 | | | | | | | | | 5400 | 4800 |
| | | | | | | | | | (6.3) | (6.8) |

THIS PAGE HAS BEEN
INTENTIONALLY LEFT BLANK

MAC-25 LUG 2 LOAD CHART - 10 DEG. ART.

LMI DUTY

312

STANDARD 1500 KG COUNTERWEIGHT (PLMXF2009)

+ EXTRA 2160 KG COUNTERWEIGHT (PLMXF2019-) ON REAR OF CRANE - SPRING LOCKOUTS ENGAGED



RC IN KILOGRAMS FOR SLEW ANGLES OF 10 DEGREES OR LESS EITHER

RC ARE BASED ON 66.6% STABILITY & STRENGTH

SIDE OF STRAIGHT AHEAD (INDICATED BY GREEN LED ON DASH).

RC ABOVE BOLD RED LINE ARE STRUCTURAL



BOOM ANGLE - UNDEFLECTED (REF.)

RC ARE BASED ON FIRM LEVEL GROUND (1% SLOPE (0.6 DE

NOTE: VALUES IN BRACKETS () ARE ACTUAL RADIUS AT ZERO DEG. BOOM ANGLE.

AS PER AS1418.5) WITH TYRES INFLATED AS PER NOTES

ENSURE WINCH ROPE IS FULLY TENSIONED

LIFT & CARRY - THE RC SHALL BE CARRIED WITH THE MINIMUM BOOM LENGTH & AS

CLOSE TO THE GROUND AS POSSIBLE AT SPEEDS NOT IN EXCESS OF 0.4 m/s (1.44 km/h)

BOOM PIVOT TO LUG 2, 2nd EXTENSION, THIRD EXTENSION RETRACTED

| Radius in Metres | (metres) | | | | | | | | | | | | | | | | | |
|------------------------|----------|-------|-------|-------|-------|-------|-------|-------|-------|-------|-------|-------|-------|-------|-------|--------|--------|--------|
| | 5.57 | 6.00 | 6.50 | 7.00 | 7.50 | 8.00 | 8.50 | 9.00 | 9.50 | 10.00 | 10.50 | 11.00 | 11.50 | 12.00 | 12.50 | 13.00 | 13.50 | 13.77 |
| 1.4 | 25000 | 25000 | 25000 | 25000 | 25000 | 25000 | 25000 | 25000 | 25000 | | | | | | | | | |
| | 42 | 46 | 50 | 54 | 57 | 59 | 61 | 63 | 64 | | | | | | | | | |
| 2 | 24150 | 24100 | 24000 | 23950 | 23900 | 23850 | 23800 | 23700 | 23650 | 23600 | 21850 | 19400 | | | | | | |
| | 32 | 38 | 43 | 47 | 51 | 54 | 56 | 58 | 60 | 62 | 63 | 64 | | | | | | |
| 2.5 | 21150 | 21150 | 21150 | 21100 | 21100 | 21050 | 21050 | 21050 | 21000 | 19950 | 17700 | 16550 | 15650 | | | | | |
| | 20 | 29 | 36 | 42 | 46 | 49 | 52 | 54 | 57 | 58 | 60 | 62 | 63 | 64 | | | | |
| 3 | 17900 | 17350 | 17350 | 17350 | 17300 | 17300 | 17300 | 17300 | 17250 | 17250 | 17250 | 16300 | 15200 | 14400 | 13600 | 12900 | | |
| | (2.9) | 18 | 28 | 35 | 40 | 44 | 48 | 50 | 53 | 55 | 57 | 59 | 60 | 61 | 63 | 64 | | |
| 3.5 | | 15600 | 14650 | 14650 | 14650 | 14600 | 14600 | 14600 | 14600 | 14550 | 14550 | 14550 | 14050 | 13300 | 12600 | 11900 | 11250 | 10900 |
| | | (3.3) | 17 | 27 | 34 | 39 | 43 | 46 | 49 | 51 | 54 | 55 | 57 | 59 | 60 | 61 | 62 | 63 |
| 4 | | | 13350 | 12600 | 12600 | 12600 | 12600 | 12600 | 12550 | 12550 | 12550 | 12550 | 12550 | 12350 | 11700 | 11050 | 10450 | 10150 |
| | | | (3.8) | 16 | 26 | 33 | 38 | 42 | 45 | 48 | 50 | 52 | 54 | 56 | 57 | 59 | 60 | 61 |
| 5 | | | | 11600 | 10200 | 9750 | 9750 | 9750 | 9750 | 9750 | 9750 | 9750 | 9700 | 9700 | 9700 | 9650 | 9100 | 8800 |
| | | | | (4.3) | (4.8) | 15 | 25 | 31 | 36 | 39 | 43 | 45 | 48 | 50 | 52 | 53 | 55 | 56 |
| 6 | | | | | | 9050 | 8150 | 7850 | 7850 | 7850 | 7850 | 7850 | 7850 | 7850 | 7850 | 7850 | 7850 | 7800 |
| | | | | | | (5.3) | (5.8) | 14 | 23 | 29 | 34 | 37 | 41 | 43 | 46 | 48 | 50 | 51 |
| 7 | | | | | | | | 7350 | 6700 | 6500 | 6500 | 6500 | 6500 | 6500 | 6500 | 6500 | 6500 | 6500 |
| | | | | | | | | (6.3) | (6.8) | 14 | 22 | 28 | 32 | 36 | 39 | 42 | 44 | 45 |
| 8 | | | | | | | | | | 6100 | 5600 | 5500 | 5500 | 5500 | 5500 | 5500 | 5500 | 5500 |
| | | | | | | | | | | (7.3) | (7.8) | 13 | 21 | 27 | 31 | 34 | 37 | 39 |
| 9 | | | | | | | | | | | | 5150 | 4750 | 4700 | 4700 | 4700 | 4700 | 4700 |
| | | | | | | | | | | | | (8.3) | (8.8) | 12 | 20 | 26 | 30 | 32 |
| 10 | | | | | | | | | | | | | | 4450 | 4100 | 4050 | 4050 | 4050 |
| | | | | | | | | | | | | | | (9.3) | (9.8) | 12 | 19 | 23 |
| 11 | | | | | | | | | | | | | | | | 3850 | 3550 | 3550 |
| | | | | | | | | | | | | | | | | (10.3) | (10.8) | 6 |
| 11.1 | | | | | | | | | | | | | | | | | | 3450 |
| | | | | | | | | | | | | | | | | | | (11.1) |

**NOTE : WEIGHT OF HOOKS, BLOCKS & OTHER
LOAD HANDLING DEVICES SHALL BE ADDED
TO THE WEIGHT OF THE LOAD**

AFTERMARKET DEPARTMENT KEY CONTACTS LIST

National Technical Support Contact 24/7

PH: 1800 837 395 (1800TEREXL)

Aftermarket Manager

Ph: +64 7 3868 9674

Customer Service Manager

Ph: +64 7 3868 9690

MANAGERS

| Spare Parts | Product Support | Service | Warranty |
|-----------------|-----------------|-----------------|-----------------|
| +64 7 3868 9652 | +64 7 3868 9655 | +64 7 3868 9690 | +64 7 3868 9657 |

SERVICE CONTACTS

| QLD | NSW | VIC | WA |
|-----------------|-----------------|-----------------|-----------------|
| +64 7 3868 9600 | +64 2 8786 4400 | +64 3 9551 9164 | +64 8 6254 2145 |

SPARE PARTS CONTACTS

| QLD | NSW | VIC | WA |
|-----------------|-----------------|-----------------|-----------------|
| +64 7 3868 9600 | +64 2 8786 4404 | +64 3 9551 8644 | +64 8 6254 2145 |

Please have the following information available before calling:

- ✓ Company name, contact name, phone number and e-mail
- ✓ Crane model and serial number
- ✓ Crane hours and kilometers

**A FULL LIST OF CONTACTS IS AVAILABLE ON REQUEST
PLEASE CALL YOUR NEAREST BRANCH OFFICE**

MAC-25 LUG 2 LOAD CHART - 40 DEG. ART.

LMI DUTY

312

STANDARD 1500 KG COUNTERWEIGHT (PLMXF2009)

+ EXTRA 2160 KG COUNTERWEIGHT (PLMXF2019)- ON REAR OF CRANE - SPRING LOCKOUTS ENGAGED



RC IN KILOGRAMS FOR SLEW ANGLES OF GREATER THAN 10 DEGREES UP TO 40 DEGREES EITHER SIDE OF STRAIGHT AHEAD (INDICATED BY RED LED ON DASH).

RC ARE BASED ON 66.6% STABILITY & STRENGTH
RC ABOVE BOLD RED LINE ARE STRUCTURAL



BOOM ANGLE - UNDEFLECTED (REF.)

RC ARE BASED ON FIRM LEVEL GROUND (1% SLOPE (0.6 DE

NOTE: VALUES IN BRACKETS () ARE ACTUAL RADIUS AT ZERO DEG. BOOM ANGLE.

AS PER AS1418.5) WITH TYRES INFLATED AS PER NOTES

ENSURE WINCH ROPE IS FULLY TENSIONED

LIFT & CARRY - THE RC SHALL BE CARRIED WITH THE MINIMUM BOOM LENGTH & AS CLOSE TO THE GROUND AS POSSIBLE AT SPEEDS NOT IN EXCESS OF 0.4 m/s (1.44 km/h)

| Radius in Metres | BOOM PIVOT TO LUG 2, 2nd EXTENSION, THIRD EXTENSION RETRACTED (metres) | | | | | | | | | | | | | | | | | |
|------------------------|---|-------|-------|-------|-------|-------|-------|-------|-------|-------|-------|-------|-------|-------|-------|--------|--------|--------|
| | 5.57 | 6.00 | 6.50 | 7.00 | 7.50 | 8.00 | 8.50 | 9.00 | 9.50 | 10.00 | 10.50 | 11.00 | 11.50 | 12.00 | 12.50 | 13.00 | 13.50 | 13.77 |
| 1.4 | 21500 | 19650 | 18000 | 16700 | 15650 | 14750 | 13950 | 13250 | 12650 | | | | | | | | | |
| | 42 | 46 | 50 | 54 | 57 | 59 | 61 | 63 | 64 | | | | | | | | | |
| 2 | 22700 | 19050 | 17050 | 15650 | 14500 | 13600 | 12850 | 12200 | 11600 | 11100 | 10650 | 10200 | | | | | | |
| | 32 | 38 | 43 | 47 | 51 | 54 | 56 | 58 | 60 | 62 | 63 | 64 | | | | | | |
| 2.5 | 18850 | 18850 | 17400 | 14900 | 13700 | 12800 | 12050 | 11400 | 10850 | 10350 | 9900 | 9500 | 9150 | 8850 | | | | |
| | 20 | 29 | 36 | 42 | 46 | 49 | 52 | 54 | 57 | 58 | 60 | 62 | 63 | 64 | | | | |
| 3 | 16200 | 15400 | 15450 | 14700 | 13800 | 12050 | 11300 | 10650 | 10100 | 9650 | 9250 | 8850 | 8550 | 8250 | 7950 | 7700 | | |
| | (2.9) | 18 | 28 | 35 | 40 | 44 | 48 | 50 | 53 | 55 | 57 | 59 | 60 | 61 | 63 | 64 | | |
| 3.5 | | 13850 | 13000 | 13000 | 12600 | 11900 | 10600 | 10000 | 9450 | 9000 | 8650 | 8300 | 7950 | 7700 | 7400 | 7200 | 6950 | 6850 |
| | | (3.3) | 17 | 27 | 34 | 39 | 43 | 46 | 49 | 51 | 54 | 55 | 57 | 59 | 60 | 61 | 62 | 63 |
| 4 | | | 11800 | 11150 | 11150 | 10950 | 10350 | 9400 | 8900 | 8450 | 8100 | 7750 | 7450 | 7200 | 6950 | 6700 | 6500 | 6400 |
| | | | (3.8) | 16 | 26 | 33 | 38 | 42 | 45 | 48 | 50 | 52 | 54 | 56 | 57 | 59 | 60 | 61 |
| 5 | | | | 10250 | 9000 | 8600 | 8600 | 8500 | 8100 | 7750 | 7500 | 6850 | 6550 | 6350 | 6100 | 5900 | 5750 | 5650 |
| | | | | (4.3) | (4.8) | 15 | 25 | 31 | 36 | 39 | 43 | 45 | 48 | 50 | 52 | 53 | 55 | 56 |
| 6 | | | | | 8000 | 7150 | 6900 | 6900 | 6800 | 6500 | 6300 | 6050 | 5600 | 5400 | 5250 | 5100 | 5000 | |
| | | | | | (5.3) | (5.8) | 14 | 23 | 29 | 34 | 37 | 41 | 43 | 46 | 48 | 50 | 51 | |
| 7 | | | | | | | | 6450 | 5850 | 5650 | 5700 | 5600 | 5350 | 5200 | 5000 | 4700 | 4550 | 4450 |
| | | | | | | | | (6.3) | (6.8) | 14 | 22 | 28 | 32 | 36 | 39 | 42 | 44 | 45 |
| 8 | | | | | | | | | | 5300 | 4850 | 4750 | 4750 | 4650 | 4500 | 4350 | 4200 | 4150 |
| | | | | | | | | | | (7.3) | (7.8) | 13 | 21 | 27 | 31 | 34 | 37 | 39 |
| 9 | | | | | | | | | | | | 4450 | 4100 | 4050 | 4050 | 3950 | 3800 | 3750 |
| | | | | | | | | | | | | (8.3) | (8.8) | 12 | 20 | 26 | 30 | 32 |
| 10 | | | | | | | | | | | | | | 3800 | 3500 | 3500 | 3500 | 3400 |
| | | | | | | | | | | | | | | (9.3) | (9.8) | 12 | 19 | 23 |
| 11 | | | | | | | | | | | | | | | | 3250 | 3050 | 3000 |
| | | | | | | | | | | | | | | | | (10.3) | (10.8) | 6 |
| 11.1 | | | | | | | | | | | | | | | | | | 2900 |
| | | | | | | | | | | | | | | | | | | (11.1) |

NOTE : WEIGHT OF HOOKS, BLOCKS & OTHER
LOAD HANDLING DEVICES SHALL BE ADDED
TO THE WEIGHT OF THE LOAD