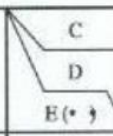


TOTAL RATED LOADS

(1) With outriggers set
(i)

Unit: ton

Outriggers fully extended								-360° →
B \ A	8.5m	14.6m	20.7m	26.8m	 E (°)	7.4m		
						0° . . .	30° . . .	
2.5m	20.0	16.0	9.0		82	3.0	2.0	
3.0m	20.0	16.0	9.0		75	3.0	2.0	
3.5m	20.0	16.0	9.0	6.8	70	3.0	2.0	
4.0m	18.5	15.5	9.0	6.8	65	2.6	1.85	
4.5m	16.5	14.3	9.0	6.8	60	2.2	1.7	
5.0m	15.0	13.2	9.0	6.8	55	1.8	1.55	
5.5m	13.7	12.2	9.0	6.8	50	1.4	1.25	
6.0m	12.5	11.4	9.0	6.8	45	1.05	1.0	
6.5m	11.5	10.6	8.5	6.8	40	0.85	0.8	
7.0m		9.9	8.1	6.8	35	0.7	0.65	
8.0m		8.0	7.3	6.15	30	0.55	0.55	
9.0m		6.5	6.5	5.55	25	0.45		
10.0m		5.45	5.65	5.05				
11.0m		4.55	4.8	4.65				
12.0m		3.8	4.15	4.25				
13.0m			3.6	3.8				
14.0m			3.15	3.25				
15.0m			2.75	2.8				
16.0m			2.4	2.5				
17.0m			2.1	2.25				
18.0m			1.85	2.0				
19.0m				1.75				
20.0m				1.55				
22.0m				1.2				
24.0m				0.9				
25.0m				0.8				

A= Boom length
B= Working radius
C= Jib length
D= Jib offset
E= Boom angle

(ii)

Unit: ton

Outriggers middle extended								-360°→	
B \ A	8.5m	14.6m	20.7m	26.8m	C D E (°)	7.4m			
						0° . . .	30° . . .		
2.5m	20.0	16.0	9.0		82	3.0	2.0		
3.0m	20.0	16.0	9.0		75	3.0	2.0		
3.5m	20.0	16.0	9.0	6.8	70	3.0	2.0		
4.0m	18.5	15.5	9.0	6.8	65	2.3	1.85		
4.5m	16.5	14.3	9.0	6.8	60	1.65	1.4		
5.0m	15.0	13.2	9.0	6.8	55	1.2	1.05		
5.5m	12.5	11.85	9.0	6.8	50	0.9	0.8		
6.0m	10.6	10.1	9.0	6.8	45	0.65	0.6		
6.5m	9.0	8.7	8.5	6.8	40	0.45	0.4		
7.0m		7.6	8.0	6.8					
8.0m		5.85	6.4	6.15					
9.0m		4.7	5.2	5.35					
10.0m		3.85	4.3	4.4					
11.0m		3.15	3.55	3.75					
12.0m		2.6	3.0	3.15					
13.0m			2.5	2.7					
14.0m			2.1	2.3					
15.0m			1.8	2.0					
16.0m			1.5	1.7					
17.0m			1.3	1.45					
18.0m			1.1	1.2					
19.0m				1.05					
20.0m				0.9					
22.0m				0.6					
24.0m				0.4					

A= Boom length
 B= Working radius
 C= Jib length
 D= Jib offset
 E= Boom angle

(iii)

Unit: ton

Outriggers minimum extended								-360° →
B \ A	8.5m	14.6m	20.7m	26.8m	7.4m			
					C	D	E (°)	
						0°	30°	
2.5m	20.0	16.0	9.0		82	3.0	2.0	
3.0m	20.0	16.0	9.0		75	3.0	2.0	
3.5m	18.8	16.0	9.0	6.8	73	3.0	2.0	
4.0m	14.5	13.6	9.0	6.8	72	2.8	2.0	
4.5m	11.5	11.1	9.0	6.8	70	2.3	1.75	
5.0m	9.5	9.1	9.0	6.8	65	1.45	1.2	
5.5m	8.0	7.65	8.1	6.8	60	0.95	0.8	
6.0m	6.9	6.55	6.95	6.8	55	0.55	0.5	
6.5m	6.0	5.7	6.1	6.3				
7.0m		5.0	5.3	5.55				
8.0m		3.8	4.2	4.35				
9.0m		2.95	3.35	3.55				
10.0m		2.35	2.75	2.9				
11.0m		1.85	2.25	2.4				
12.0m		1.45	1.8	2.0				
13.0m			1.5	1.65				
14.0m			1.25	1.35				
15.0m			1.0	1.1				
16.0m			0.8	0.9				
17.0m			0.6	0.75				
18.0m			0.4	0.6				
19.0m				0.45				

A= Boom length
 B= Working radius
 C= Jib length
 D= Jib offset
 E= Boom angle

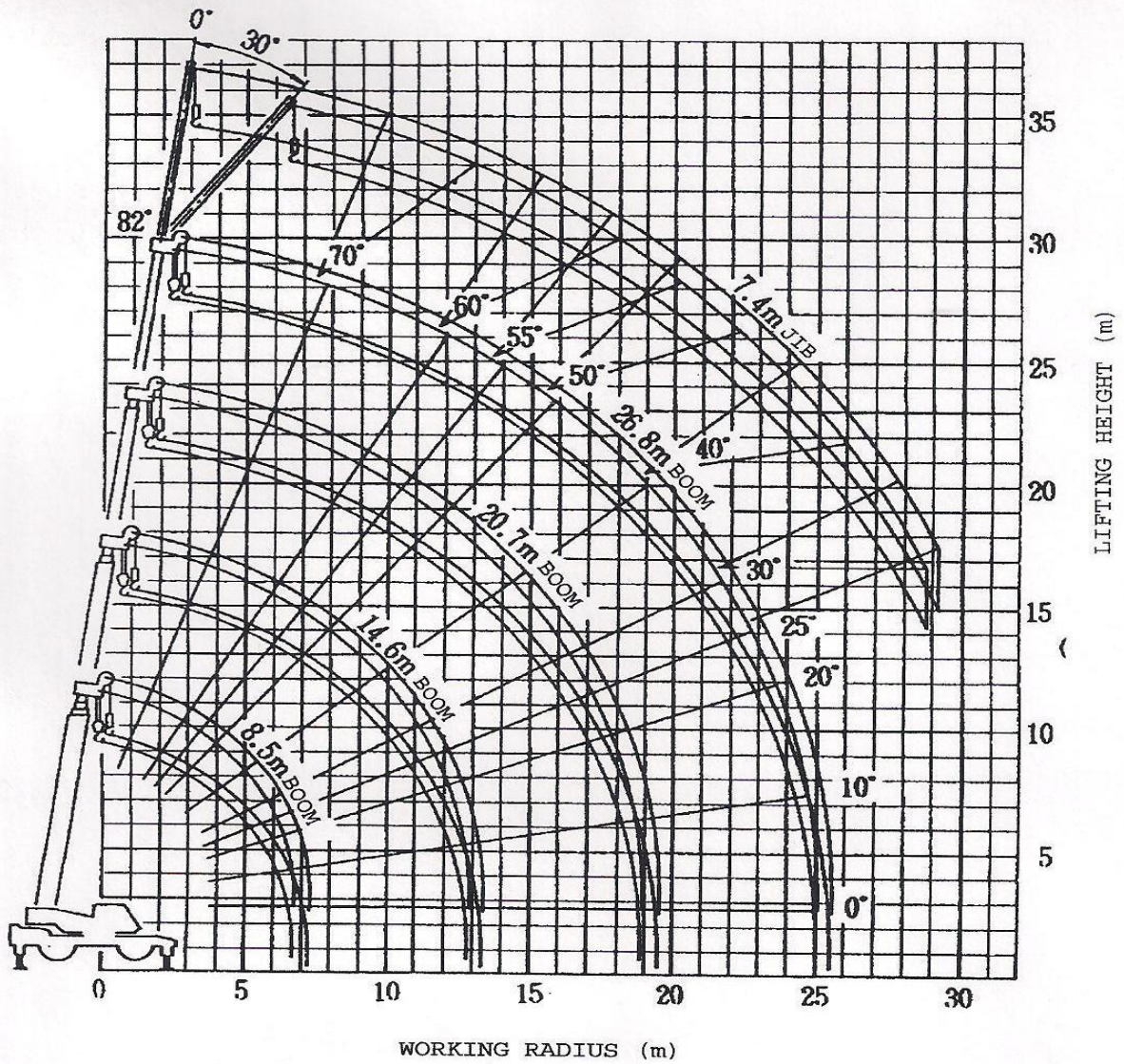
(2) Without outriggers

Unit: ton

B (m)	Stationary						Creep (travelling at 1.6km/h or less)					
	8.5m Boom		14.6m Boom		20.7m Boom		8.5m Boom		14.6m Boom		20.7m Boom	
	F	G	F	G	F	G	F	G	F	G	F	G
3.0	12.2	8.2	8.7	7.2			8.5	6.5	6.7	5.0		
3.5	10.7	7.2	8.7	7.0	6.2	4.5	8.3	5.6	6.7	5.0	5.2	3.7
4.0	10.2	6.0	8.7	5.6	6.2	4.5	7.5	4.7	6.7	4.6	5.2	3.7
4.5	9.1	4.9	8.0	4.5	6.2	4.5	6.8	3.7	6.3	3.7	5.2	3.7
5.0	8.0	4.0	7.2	3.75	6.2	4.1	6.1	3.1	5.8	3.0	5.2	3.3
5.5	6.9	3.4	6.4	3.2	5.7	3.5	5.4	2.6	5.2	2.5	4.8	2.8
6.0	6.1	2.8	5.65	2.7	5.3	3.0	4.9	2.2	4.6	2.1	4.4	2.3
6.5	5.2	2.4	4.9	2.2	4.85	2.55	4.2	1.8	4.05	1.7	4.0	2.0
7.0			4.3	1.85	4.5	2.2			3.6	1.4	3.7	1.7
8.0			3.3	1.25	3.7	1.65			2.75	0.9	3.1	1.2
9.0			2.55	0.8	3.0	1.2			2.15	0.6	2.5	0.9
10.0			2.05	0.4	2.5	0.85			1.75		2.05	0.6
11.0			1.6		2.0	0.55			1.35		1.65	
12.0			1.25		1.6				1.05		1.3	
13.0					1.3						1.05	
14.0					1.05						0.85	
15.0					0.85						0.65	
16.0					0.65						0.5	
17.0					0.45							

B= Working radius F= Front G= 360° . . .

WORKING RADIUS - LIFTING HEIGHT



NOTES:

1. The deflection of the boom is not incorporated in the figure above.
2. The figure above is for the case where the outriggers are fully extended (360°).