

LOAD CHART C1184- MODEL AT-14

HOIST ROPE

DIAMETER : Nominal 13mm.
CONST : 34x7(6/1)NR FIBRE CORE MIN. BREAKING LOAD : 98.1 KN.
MACHINE SPLICE & THIMBLE EYE, ONE END ONLY, LENGTH : 60m.



S.W.L. ARE BASED ON 66.7% STABILITY & STRENGTH
- S.W.L. ABOVE BOLD RED LINE ARE STRUCTURAL.
S.W.L. ARE BASED ON FIRM LEVEL GROUND WITH TYRES INFLATED AS PER CHART.
WEIGHT OF HOOKS, BLOCKS, SLINGS & OTHER LOAD HANDLING DEVICES SHALL BE
ADDED TO THE WEIGHT OF THE LOAD.
LIFT & CARRY - THE S.W.L. SHALL BE CARRIED WITH THE MINIMUM BOOM LENGTH
& AS CLOSE TO THE GROUND AS POSSIBLE AT SPEEDS NOT IN EXCESS OF 2 KPH.

BOOM HEAD MOUNTED RHINO HOOK

MAXIMUM S.W.L. ABOVE BOLD BLACK LINE IS 6000 KG
WHICH IS STRUCTURAL.
S.W.L. BELOW BOLD BLACK LINE AS PER CHART WITH LENGTH
AS READ ON BOOM LENGTH INDICATOR + 0.50 METRE.



S.W.L. IN KILOGRAMS FOR SLEW ANGLES OF 10° OR LESS EITHER
SIDE OF STRAIGHT AHEAD (INDICATED BY GREEN LED ON DASH).

S.W.L. IN KILOGRAMS FOR SLEW ANGLES OF GREATER THAN 10° EITHER
SIDE OF STRAIGHT AHEAD (INDICATED BY YELLOW LED ON DASH).

RADIUS IN METRES.

FLY JIB

BOOM ANGLE	BOOM LENGTH IN METRES - MANUAL EXTENSION RETRACTED.																		MANUAL EXTENSION EXTENDED
	5.65	6.00	6.50	7.00	7.50	8.00	8.50	9.00	9.50	10.00	10.50	11.00	11.50	12.00	12.50	13.00	13.50	13.85	
60°	/																		7500
	/																		7500
50°	/																		7500
	/																		7500
40°	/																		7500
	/																		7500
30°	/																		7500
	/																		7500
20°	/																		7500
	/																		7500
10°	/																		7500
	/																		7500
0°	/																		7500
	/																		7500

BOOM ANGLE	BOOM PIVOT TO INNER LUG, 1st JIB EXTENSION MANUAL EXTENSION RETRACTED.									
	3.58	4.00	4.50	5.00	5.50	6.00	6.50	7.00	7.68	
60°	/									
	/									
50°	/									
	/									
40°	/									
	/									
30°	/									
	/									
20°	/									
	/									
10°	/									
	/									
0°	/									
	/									

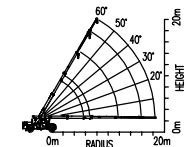
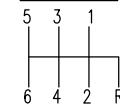
BOOM ANGLE	BOOM PIVOT TO OUTER LUG, 1st JIB EXTENSION MANUAL EXTENSION RETRACTED.									
	4.70	5.00	5.50	6.00	6.50	7.00	7.50	8.00	8.50	8.80
60°	/									
	/									
50°	/									
	/									
40°	/									
	/									
30°	/									
	/									
20°	/									
	/									
10°	/									
	/									
0°	/									
	/									

BOOM ANGLE	BOOM FULLY EXTENDED MANUAL EXTENDED 4.05m FLY JIB FITTED.	
	RADIUS(m)	SWL (KG)
60°	8.03	750
50°	10.97	700
40°	13.53	650
30°	15.60	600
20°	17.15	550
10°	18.11	500
0°	18.45	500

TYRES

- FRONT : 11.00x20x16 PLY INFLATED TO 115 PSI (DUAL)
REAR : 11.00x20x16 PLY INFLATED TO 90 PSI (DUAL)
or
FRONT : 16.5 R 22.5 SUPERSINGLE INFLATED TO 115 PSI
REAR : 16.5 R 22.5 SUPERSINGLE INFLATED TO 85 PSI
- FRONT : 24 R 21 SUPERSINGLE INFLATED TO 105 PSI
REAR : 24 R 21 SUPERSINGLE INFLATED TO 75 PSI
or
FRONT : 12.00x20x16 PLY INFLATED TO 115 PSI (DUAL)
REAR : 12.00x20x16 PLY INFLATED TO 90 PSI (DUAL)

GEAR CHANGE



WARNING

DO NOT LEAVE KEY "ON"
AND PARK BRAKE "OFF"
EMERGENCY STEERING
WILL ACTIVATE.

WINCH SAFE WORKING LOADS

SINGLE PART	2500 KG
TWO PARTS	5000 KG
THREE PARTS	7500 KG

